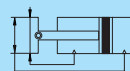


## DOUBLE ACTING WITH SENSOR SWITCH

DSH3



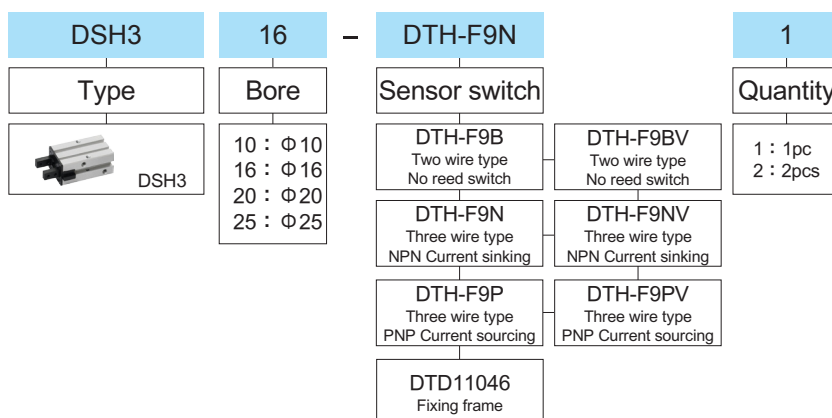
### Features

- Available with comprehensive range of bore sizes 10~25mm.
- Highly accurate air driven device for holding work-piece.
- Magnetic as standard.

### Specification

Type	DSH3
Bore	Φ 10、16、20、25
Power fluid	Filtered air with or without lubrication
The range of pressure	1.5 ~ 6.1 kgf/cm <sup>2</sup>
The range of temperature	-10 ~ +60 °C (No freezing)
Operation tolerance	± 0.01 mm
Max. frequency	180 c.p.m

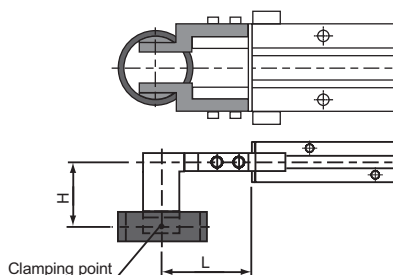
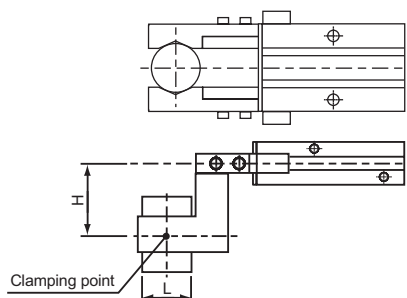
### How to order



### Check clamping point

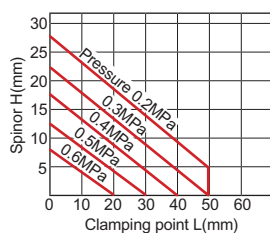
● Outside diameter clamping condition

● Inside diameter clamping condition

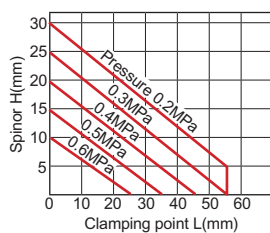


- Clamping point of work piece is spinor of operating pressure : H should not exceed the values illustrated in the graph of below diagrams.
- If clamping point of work piece in the limited extent, it would make grippers shorten life.

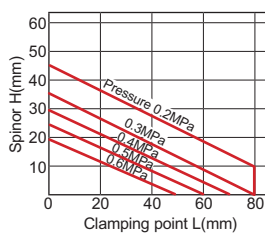
DSH3-10



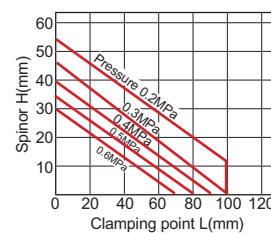
DSH3-16



DSH3-20

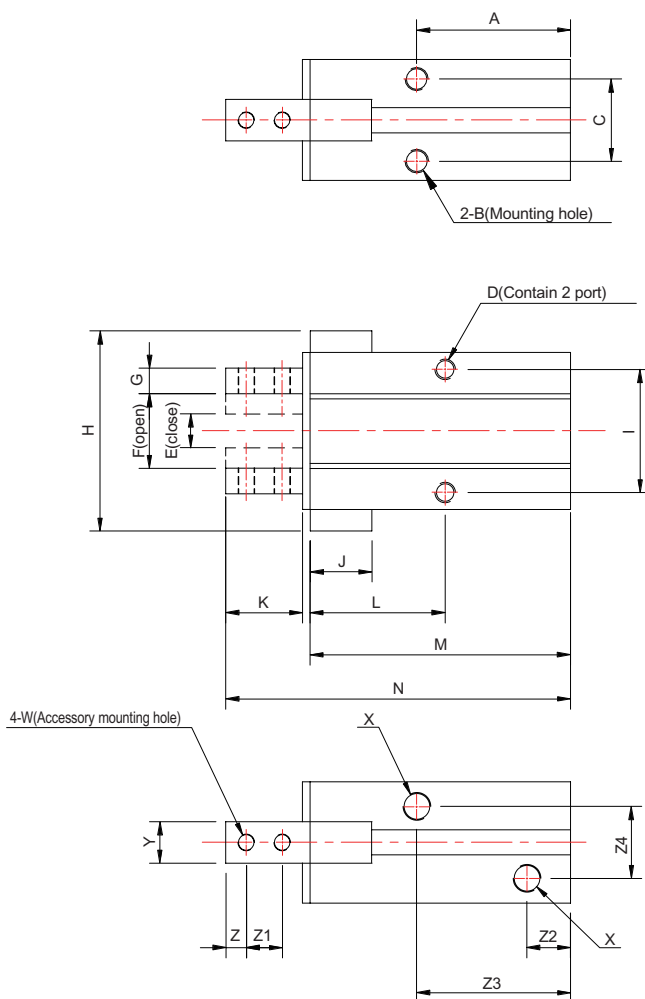


DSH3-25

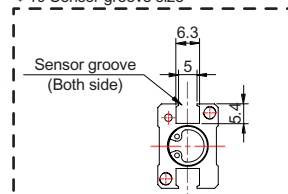


## DSH3

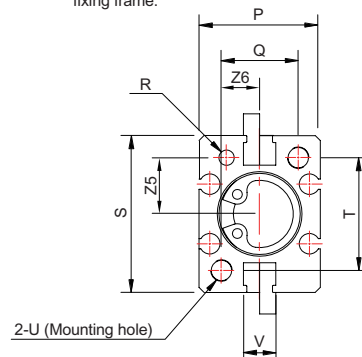
### Dimensional features



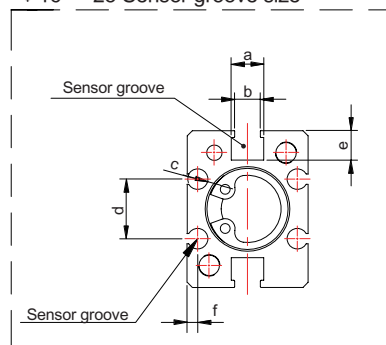
Φ 10 Sensor groove size



Note : Only using sensor switches TH with fixing frame.



Φ 16 ~ 25 Sensor groove size



Note : If using square sensor groove, through hole can not be used for mounting .

### Dimensional table

Mark Bore	A	B	C	D	E	F	G	H	I	J	K	L	M	N	P	Q	R	S
Φ 10	27	M3x0.5 deep 6	11.4	4-M3x0.5 deep 5.5(screw hole) Φ 2.6(screw hole)	5.25 <sub>-0.6</sub>	9.87 <sub>+2.1</sub> 0	4	27.87	16	9.5	12	21	44	57	16.4	12	Φ 2H9 deep 3	23
Φ 16	30	M4x0.7 deep 4.5	16	4-M4x0.7 deep 8(screw hole) Φ 3.4(screw hole)	6.6 <sub>-0.6</sub>	14.5 <sub>+2.1</sub> 0	5	39	24	12	15	26.3	50.8	67.3	23.6	15	Φ 3H9 deep 3	30.6
Φ 20	35	M5x0.8 deep 8	18.6	4-M5x0.8 deep 10(screw hole) Φ 4.3(screw hole)	7 <sub>-0.6</sub>	16.6 <sub>+2.1</sub> 0	8	51.6	30	14	20	34	63	85	27.6	18	Φ 4H9 deep 4	42
Φ 25	36.5	M6x1.0 deep 10	22	2-M6x1.0 deep 12	8.6 <sub>-0.7</sub>	22.5 <sub>+2.4</sub> 0	10	62.5	36	20	25	45	75	103	33.6	22	Φ 4H9 deep 4	52

Mark Bore	T	U	V	W	X	Y	Z	Z1	Z2	Z3	Z4	Z5	Z6	a	b	c	d	e	f
Φ 10	18	M3x0.5 deep 6	6.3	—	M3x0.5 deep 4.5	5	3	5.7	9.5	26.5	10	7.6	5.2	6.3	5	—	—	5.4	—
Φ 16	22	M4x0.7 deep 8	6.3	M3x0.5	M5x0.8	8	4	7	8.5	30	14	11	7.5	6.3	5	Φ 4	11.6	5.8	2.1
Φ 20	32	M5x0.8 deep 10	6.3	M4x0.7	M5x0.8 deep 6	10 <sub>+0.02</sub> -0.02	5	9	10.5	34.5	14	16.8	7.5	6.3	5	Φ 4	14	9	2.1
Φ 25	40	M6x1.0 deep 12	6.3	M5x0.8	M5x0.8 deep 6	12 <sub>+0.02</sub> -0.02	6	12	8.5	36.5	15	21.8	10	6.3	5	Φ 4	19	11.5	3.5