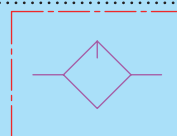




## LUBRICATOR

## DMAL




JIS symbol

### Specifications

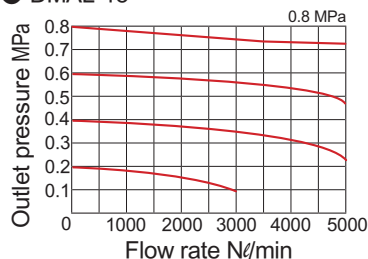
Type	DMAL-15	DMAL-20
Port size	Rc (PT) 1 / 2	Rc (PT) 3 / 4
The range of pressure	0.5 ~ 10.2 kgf/cm <sup>2</sup>	
Proof pressure	16.3 kgf/cm <sup>2</sup>	
The range of temperature	0 ~ +60 °C (No freezing)	
Filter capacity	130 c.c	

### How to order

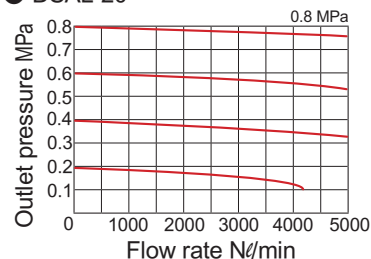
<b>DMAL</b>	—	<b>15</b>
Type		Size
		15 : PT1/2 20 : PT3/4

### Flow characteristics

#### ● DMAL-15

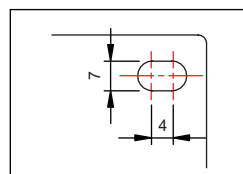
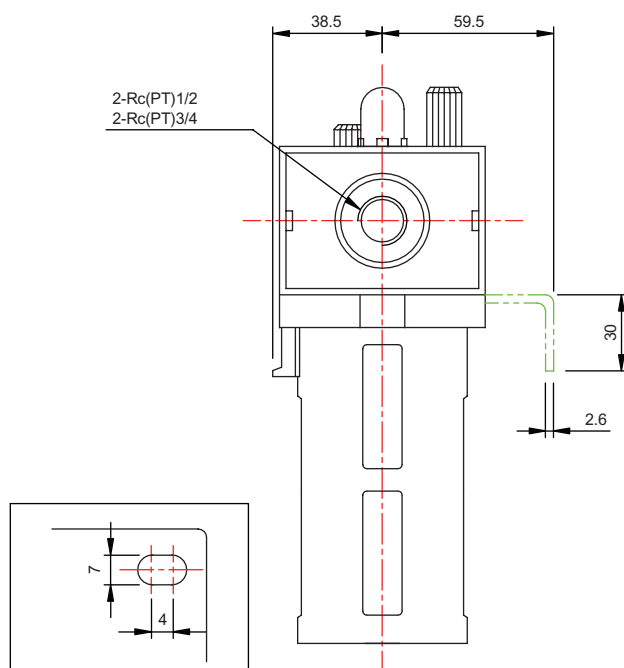
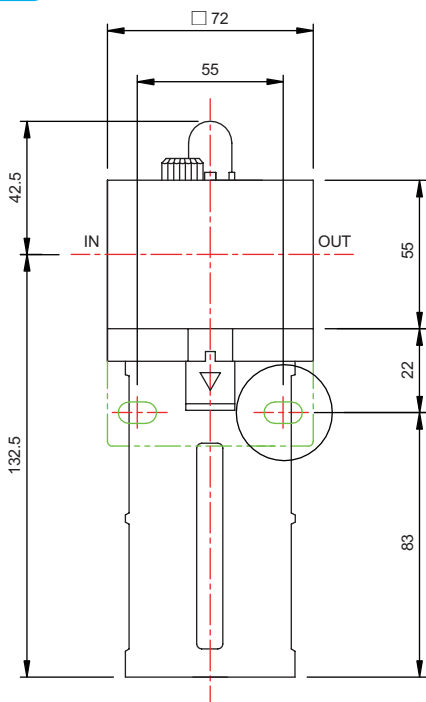


#### ● DSAL-20



### DMAL

### Dimensional features



Note : with auto drain