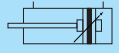
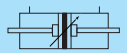




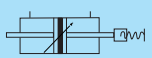
DOUBLE ACTING
-SINGLE ROD TYPE..... **AZ**



DOUBLE ACTING
-DOUBLE END ROD TYPE **AZD**



DOUBLE ACTING
-ADJUSTABLE FOWARD STROKE CYLINDER..... **AZN**




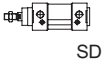
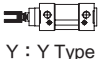

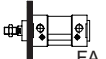
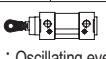

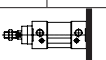
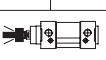
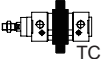
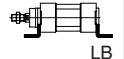


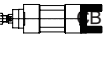
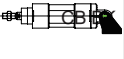
Features

- AZ series cylinders according to ISO 6431 、VDMA 2462 and NFE49-003-1 ◦
- Piston with magnet is standard accessory in the cylinders.

Specification

Type	AZ	AZD	AZN
Bore	Φ 32 、 40 、 50 、 63 、 80 、 100		
Power fluid	Filtered air with or without lubrication		
The range of pressure	1.02 ～ 10.5 kgf/cm ²		
The range of temperature	-10 ～ +60 °C (Don't freeze)		
Material of cylinder barrel	Aluminium extrusion, Anodised 20 micruons		

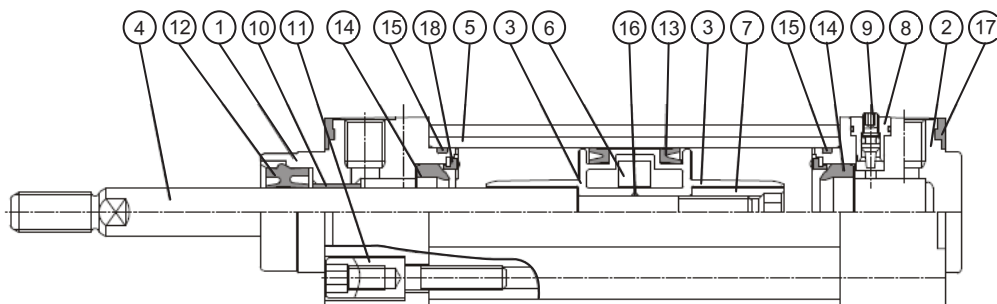
How to order

AZ	SD	32	N	50	A	Y	A	1
Type	Holder	Bore	Cushion	Stroke	Adjustable stroke	Accessories	Sensor switch	Quantity
 AZ	 SD	32 : Φ 32 40 : Φ 40 50 : Φ 50 63 : Φ 63 80 : Φ 80 100 : Φ 100	B : with cushion N : No cushion	Please see stroke table	No code : standard type A : Adjustable 25mm B : Adjustable 50mm ※Suited for AZN!	 Y : Y Type	AZRK	1 : 1pc 2 : 2pcs
 AZD	 FA					 S : Oscillating eye		
 AZN	 FB					 F : Compensating joint		
	 TC	 LB						
	 CA	 CS						
	 CB	 CB						

Stroke table

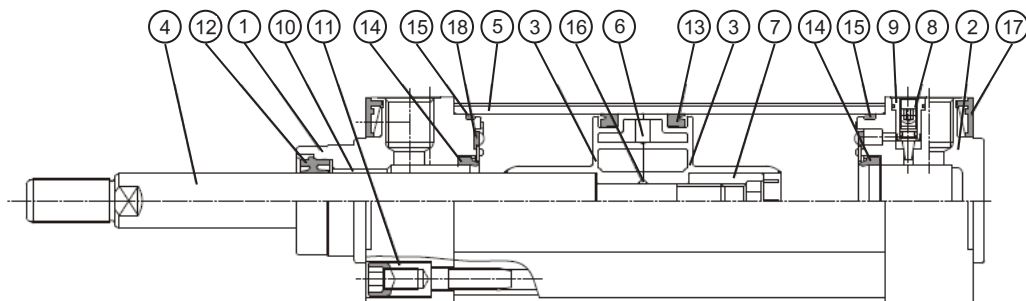
Bore	Stroke (mm)
Φ 32 、 40 、 50 、 63 、 80 、 100	25,50,75,100,125,150,175,200,250,300,350,400,450,500

AZ Inside structure

 ● Bore $\Phi 32 \sim \Phi 40$

Parts list

No.	Part name	Quantity	No.	Part name	Quantity	No.	Part name	Quantity
1	Rod cover	1	7	Piston nut	1	13	Piston packing	2
2	Head cover	1	8	Cushion needle	2	14	Cushion packing	2
3	Piston	2	9	Cushion	2	15	Cylinder gasket	2
4	Piston rod	1	10	Oilless bearing	1	16	Piston gasket	1
5	Cylinder tube	1	11	Tie bolt	8	17	Dust-proof plate	2
6	Magnet gasket	1	12	Rod packing	1	18	Shockproof washer	2

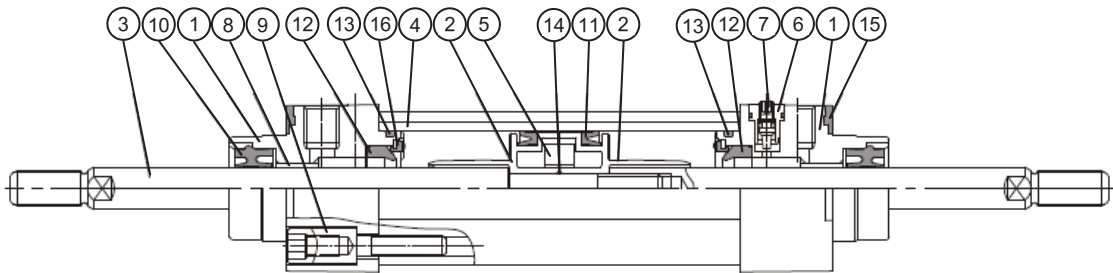
AZ Inside structure

 ● Bore $\Phi 50 \sim \Phi 100$

Parts list

No.	Part name	Quantity	No.	Part name	Quantity	No.	Part name	Quantity
1	Rod cover	1	7	Piston nut	1	13	Piston packing	2
2	Head cover	1	8	Cushion needle	2	14	Cushion packing	2
3	Piston	2	9	Cushion	2	15	Cylinder gasket	2
4	Piston rod	1	10	Oilless bearing	1	16	Piston gasket	1
5	cylinder tube	1	11	Tie bolt	8	17	Dust-proof plate	2
6	Magnet gasket	1	12	Rod packing	1	18	Shockproof washer	2

AZD

Inside structure

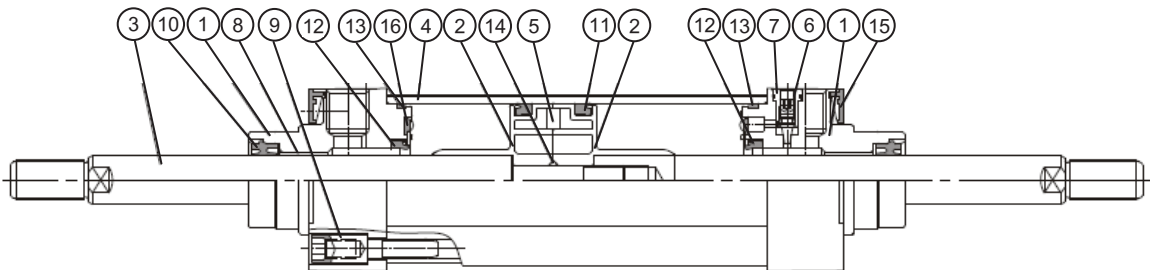
● Bore $\Phi 32 \sim \Phi 40$ 

Parts list

No.	Part name	Quantity	No.	Part name	Quantity	No.	Part name	Quantity
1	Rod cover	2	7	Cushion	2	13	Cylinder gasket	2
2	Piston	2	8	Oilless bearing	2	14	Piston gasket	2
3	Piston rod	1	9	Tie bolt	8	15	Dust-proof plate	2
4	Cylinder tube	1	10	Rod packing	2	16	Shockproof washer	1
5	Magnet	1	11	Piston packing	2			
6	Cushion needle	2	12	Cushion packing	2			

AZD

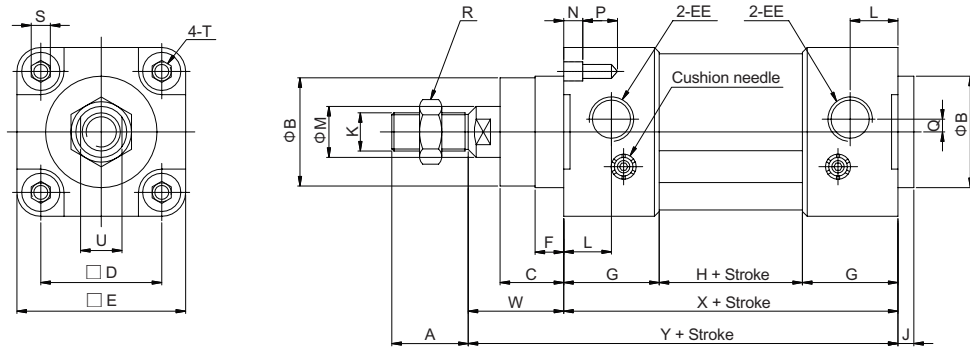
Inside structure

● Bore $\Phi 50 \sim \Phi 100$ 

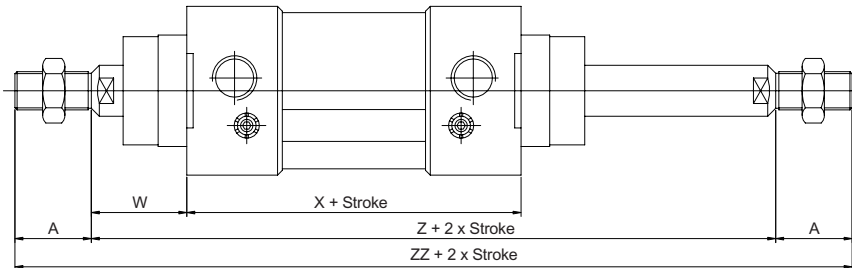
Parts list

No.	Part name	Quantity	No.	Part name	Quantity	No.	Part name	Quantity
1	Rod cover	2	7	Cushion	2	13	Cylinder gasket	2
2	Piston	2	8	Oilless bearing	2	14	Piston gasket	1
3	Piston rod	2	9	Tie bolt	8	15	Dust-proof plate	2
4	Cylinder tube	1	10	Rod packing	2	16	Shockproof washer	2
5	Magnet gasket	1	11	Piston packing	2			
6	Cushion needle	2	12	Cushion packing	2			

AZ Double acting - single end rod type / Dimensional features



AZD Double acting - double end rod type / Dimensional features

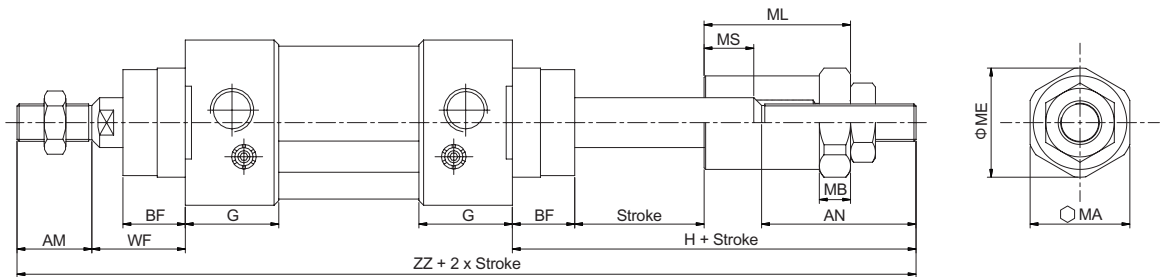


Dimensional Table

Mark Bore	A	B	C	D	E	EE	F	G	H	J	K	L	M	N	P	Q	R	S	T	U	W	X	Y	Z	ZZ
Φ 32	22	30	16	32.5	47	G 1/8	7	26	42	4	M10x1.25	13	12	6	9	4.5	17	6	M6	10	26	94	120	146	190
Φ 40	24	35	20	38	53	G 1/4	9	30	45	4	M12x1.25	15	16	6	9	5	19	6	M6	14	30	105	135	165	213
Φ 50	32	40	25	46.5	65	G 1/4	11	30	46	4	M16x1.5	15	20	6	12	6	24	8	M8	17	37	106	143	180	244
Φ 63	32	45	25	56.5	75	G 3/8	14	32	57	4	M16x1.5	16	20	6	12	8	24	8	M8	17	37	121	158	195	259
Φ 80	40	45	32	72	95	G 3/8	15	38	52	6	M20x1.5	19	25	6	16	9	27	10	M10	22	46	128	174	220	300
Φ 100	40	55	35	89	115	G 1/2	15	40	58	6	M20x1.5	20	25	6	16	7	27	10	M10	22	51	138	189	240	320

AZN

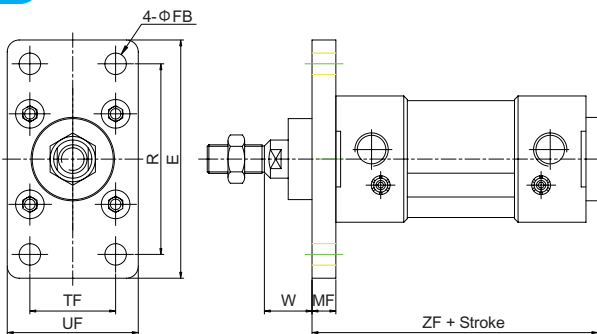
Double acting - adjustable forward stroke cylinder / Dimensional features



Dimensional Table

Mark Bore	AM	AN		BF	DF	G	H		MA	MB	ME	ML		MS		WF	ZZ	
		A	B				A	B				A	B	A	B		A	B
Φ 32	22	47	72	16	10	26	73	98	27	10	29	47	72	35	62	26	215	240
Φ 40	24	48	73	20	10	30	78	103	32	10	35	47	72	37	62	30	237	262
Φ 50	32	52	77	25	12	30	92	117	41	12	44	56	81	41	66	37	267	292
Φ 63	32	52	77	25	12	32	92	117	41	12	44	56	81	41	66	37	282	307
Φ 80	40	58	83	32	14	38	107	132	50.8	15	55	63	88	43	68	46	321	346
Φ 100	40	58	83	35	16	40	107	132	50.8	15	55	63	88	43	68	51	336	361

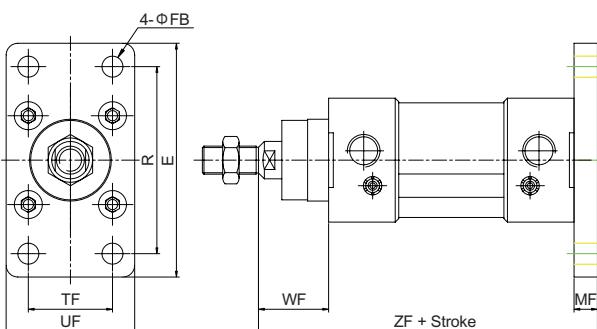
FA Accessories



Dimensional Table

Mark Bore	E	FB	MF	R	TF	UF	W	ZF
Φ 32	79	7	10	64	32	50	16	108
Φ 40	90	9	10	72	36	55	20	120
Φ 50	110	9	12	90	45	65	25	123
Φ 63	120	9	12	100	50	75	25	138
Φ 80	153	12	16	126	63	95	30	150
Φ 100	178	14	16	150	75	115	35	160

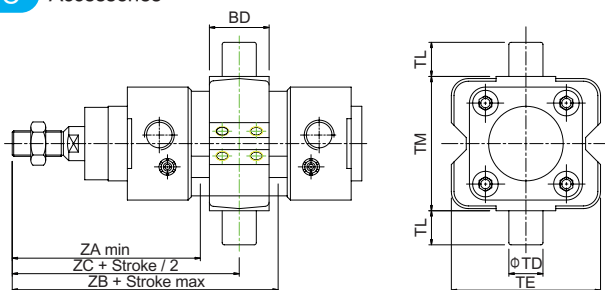
FB Accessories



Dimensional Table

Mark Bore	E	FB	MF	R	TF	UF	WF	ZF
Φ 32	79	7	10	64	32	50	26	130
Φ 40	90	9	10	72	36	55	30	145
Φ 50	110	9	12	90	45	65	37	155
Φ 63	120	9	12	100	50	75	37	170
Φ 80	153	12	16	126	63	95	46	190
Φ 100	178	14	16	150	75	115	51	205

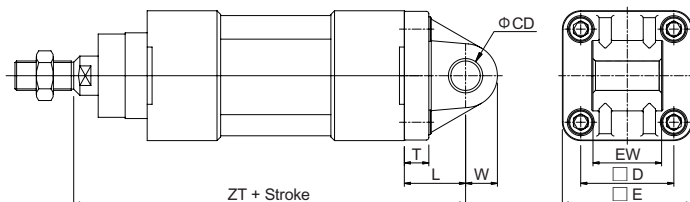
TC Accessories



Dimensional Talbe

Mark Bore	BD	TD	TE	TL	TM	ZA	ZB	ZC
Φ32	22	12	58	12	50	63	83	73
Φ40	28	16	70	16	63	74	91	82.5
Φ50	32	16	85	16	75	83	97	90
Φ63	35	20	100	20	90	86.5	108.5	97.5
Φ80	40	20	120	20	110	104	116	110
Φ100	45	25	145	25	132	113.5	126.5	120

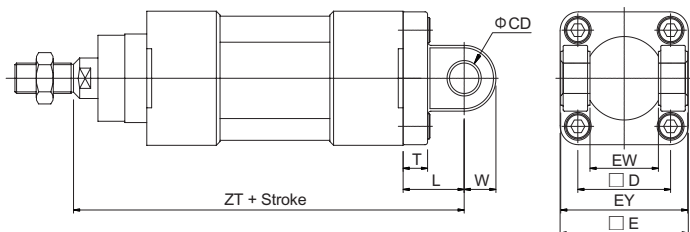
CA Accessories



Dimensional Talbe

Mark Bore	CD	D	E	EW	L	T	W	ZT
Φ32	10	32.5	47	26	22	10	10.5	142
Φ40	12	38	53	28	25	10	13	160
Φ50	12	46.5	65	32	27	12	13	170
Φ63	16	56.5	75	40	32	12	17	190
Φ80	16	72	95	50	36	16	17	210
Φ100	20	89	115	60	41	16	21	230

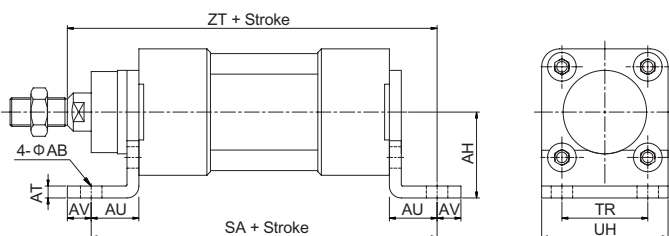
CB Accessories



Dimensional Talbe

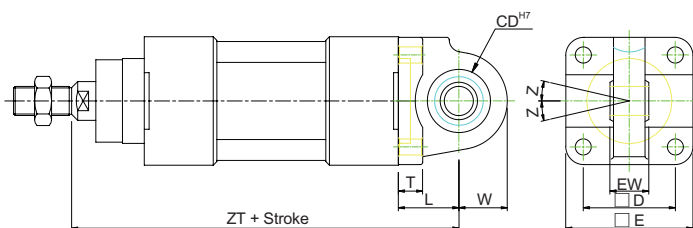
Mark Bore	CD	D	E	EW	EY	L	T	W	ZT
Φ32	10	32.5	47	26	45	22	10	10.5	142
Φ40	12	38	53	28	52	25	10	11	160
Φ50	12	46.5	65	32	60	27	12	12	170
Φ63	16	56.5	75	40	70	32	12	15	190
Φ80	16	72	95	50	90	36	16	17	210
Φ100	20	89	115	60	110	41	16	21	230

LB Accessories



Dimensional Talbe

Mark Bore	AB	AH	AT	AU	AV	SA	TR	UH	ZT
Φ32	7	32	5	24	8	142	32	47	144
Φ40	9	36	5	28	10	161	36	53	163
Φ50	9	45	5	32	10	170	45	65	175
Φ63	9	50	5	32	10	185	50	75	190
Φ80	12	63	6	41	13	210	63	95	215
Φ100	14	71	6	41	15	220	75	115	230

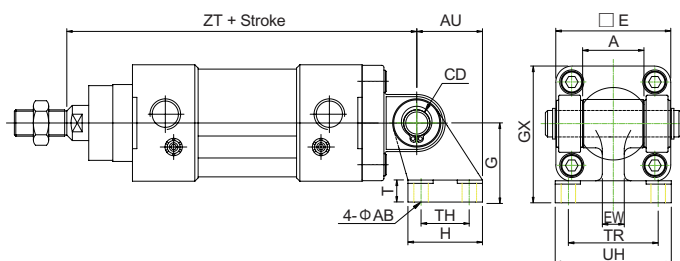
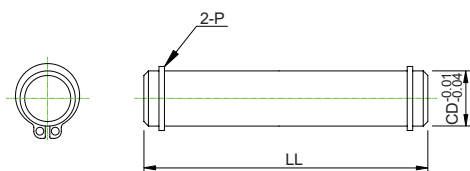
CS Accessories

Dimensional Talbe

Mark Bore	CD	D	E	EW	L	T	W	Z	ZT
Φ 32	10	32.5	47	14	22	7	18	13°	142
Φ 40	12	38	53	16	25	8	21	13°	160
Φ 50	12	46.5	65	21	27	10	23	13°	170
Φ 63	16	56.5	75	21	32	10	27	15°	190
Φ 80	16	72	95	25	36	12	34	15°	210
Φ 100	20	89	115	25	41	15	34	15°	230

Dimensional Talbe

Mark Bore	A	AB	AU	CD	E	EW	T	G	GX
Φ 32	26	7	21	10	47	10	8	32	55.5
Φ 40	28	7	24	12	53	12	10	36	62.5
Φ 50	32	9	33	12	65	12	12	45	77.5
Φ 63	40	9	37	16	75	15	12	50	87.5
Φ 80	50	11	47	16	95	15	14	63	110.5
Φ 100	60	11	55	20	115	22	15	71	128.5

Mark Bore	H	TH	TR	UH	ZT
Φ 32	31	18	38	51	142
Φ 40	35	22	41	54	160
Φ 50	45	30	50	65	170
Φ 63	50	35	52	67	190
Φ 80	60	40	66	86	210
Φ 100	70	50	76	96	230

CB BK Accessories

CB Pin / Accessories

Dimensional Talbe

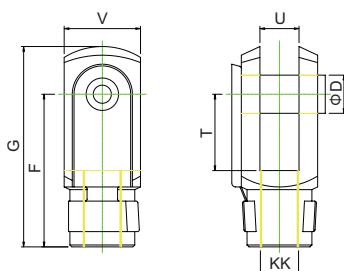
Mark Bore	CD	LL	P
Φ 32	10	52	STW-10
Φ 40	12	60	STW-12
Φ 50	12	68	STW-12
Φ 63	16	79	STW-16
Φ 80	16	99	STW-16
Φ 100	20	119	STW-20

Weight of the guide cylinder

Unit : kg

Mark Bore	AZ		AZD		AZN			
	Basic weight	Stroke 25mm	Basic weight	Stroke 25mm	Basic weight	Stroke 25mm	Basic weight	Stroke 25mm
					Adjustable 25mm		Adjustable 50mm	
Φ 32	0.56	0.056	0.62	0.078	0.78	0.078	0.86	0.078
Φ 40	0.85	0.080	0.98	0.120	1.09	0.120	1.22	0.120
Φ 50	1.22	0.117	1.46	0.179	1.82	0.179	2.07	0.179
Φ 63	1.72	0.128	1.96	0.189	2.26	0.189	2.51	0.189
Φ 80	3.25	0.188	3.69	0.285	4.45	0.285	4.79	0.285
Φ 100	4.28	0.220	4.87	0.317	5.63	0.317	5.97	0.317

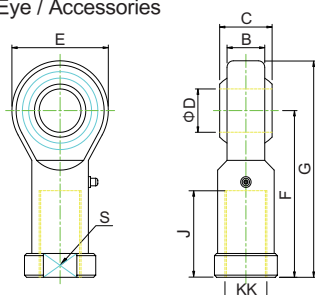
Y Rod Clevis / Accessories



Dimensional Table

Mark Bore	D	F	G	KK	T	U	V
Φ 32	10	40	52	M10X1.25	20	10	20
Φ 40	12	48	62	M12X1.25	24	12	24
Φ 50、63	16	64	83	M16X1.5	32	16	32
Φ 80、100	20	80	105	M20X1.5	40	20	40

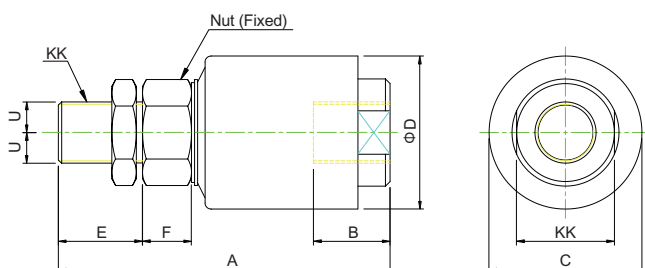
S Oscillating Eye / Accessories



Dimensional Table

Mark Bore	B	C	D	E	F	G	J	K	S
Φ 32	10.5	14	10	28	43	57	20	M10x1.25	17
Φ 40	12	16	12	30	50	65	24	M12x1.25	19
Φ 50、63	15	21	16	38	64	83	33	M16x1.5	22
Φ 80、100	18	25	20	46	77	100	40	M20x1.5	30

F Compensating / Accessories



Dimensional Table

Mark Bore	A	B	C	D	E	F	KK	U
Φ 32	54	13	24	25.5	12.5	8	M10x1.25	1
Φ 40	71	17	29	31	16	10	M12x1.25	1.15
Φ 50、63	88	21	27	38	24	13	M16x1.5	1.65
Φ 80、100	105	25	32	50	27.5	16	M20x1.5	2.15

Mounting weight

Unit : kg

Mark Bore	FA / FB	CA	CB	LB	TC	Y	S	Nut (Rod)
Φ 32	0.224	0.225	0.197	0.170	0.171	0.088	0.080	0.008
Φ 40	0.266	0.306	0.221	0.219	0.409	0.147	0.112	0.010
Φ 50	0.480	0.473	0.420	0.344	0.604	0.335	0.202	0.017
Φ 63	0.602	0.743	0.600	0.405	1.023	0.335	0.202	0.017
Φ 80	1.424	1.366	1.134	0.839	—	0.677	0.368	0.020
Φ 100	1.974	2.156	1.795	1.045	—	0.677	0.698	0.020