

### Functions of hydraulic shock absorber

- Eliminating vibration and absorbing striking energy in a short time.
- Reducing operating noise and offering a quiet working environment.
- Accelerating machine operation and elevating production capacity.
- Extending machine life time and reducing after sale service.
- Improving quality of products.

### Note



- Please do not drive shock absorbers into their final position under full load.
- Reusing is prohibited after dismantling.  
Do not paint on the rod and threaded body.
- Stop collar protects shock absorber's piston from bottoming out and can be used in adjusting stroke.
- Please pay attention to assembly, especially on steel thickness & offcenter angle.
- Install shock absorbers as close to the moving object's center as possible.
- When installing over 2 pcs of shock absorbers, please ensure that they have the same stroke.

### Specifications

Type	AC0806	AC1005	AC1008	AC1210	AC1412	AC1416	AC2020	AC2525	AC2540	AC3660
Stroke (mm)	6	5	8	10	12	16	20	25	40	60
Max. Nm Per Cycle Nm(Et)	2	3	4	5	15	20	40	80	120	250
Max. Nm Per Hour Nm(Etc)	8,800	10,800	15,200	17,640	30,000	35,000	40,000	54,000	75,000	120,000
Max. Effective Mass Kg (Me)	0.5 ~ 6.0	1.0 ~ 7.0	2.0 ~ 9.0	5.0 ~ 30	8.0 ~ 100	10 ~ 150	30 ~ 700	200 ~ 1,500	300 ~ 2,000	400 ~ 2,400
Max. Impact Speed m/s (V)	0.5 ~ 2.0	0.8 ~ 3.0	0.8 ~ 3.0	0.8 ~ 3.0	0.8 ~ 3.0	0.8 ~ 3.0	1.0 ~ 3.5	1.0 ~ 4.0	1.0 ~ 4.0	1.0 ~ 4.0
Operating Temperature (°C)	-10 ~ +80	-10 ~ +80	-10 ~ +80	-10 ~ +80	-10 ~ +80	-10 ~ +80	-10 ~ +80	-10 ~ +80	-10 ~ +80	-10 ~ +80
Weight(g)	11	14	20	31.5	80	90	215	300	430	1,030

Type	AD1410	AD2016	AD2525	AD2540	AD3650	AD4225	AD4250	AD4275	AD64050	AD64100	AD64150
Stroke (mm)	10	16	25	40	50	25	50	75	50	100	150
Max. Nm Per Cycle Nm(Et)	20	25	85	100	300	260	500	750	12,000	24,000	36,000
Max. Nm Per Hour Nm(Etc)	25,000	30,000	54,000	80,000	100,000	125,000	150,000	180,000	1,500,000	2,000,000	2,500,000
Max. Effective Maxx Kg (Me)	80	200	400	700	1,400	3,000	4,000	6,000	12,727	18,181	23,636
Max. Impact Speed m/s (V)	3.0	3.5	3.5	4.0	3.0	3.5	4.5	4.5	1.5	1.5	1.5
Operating Temperature (°C)	-10~+80	-10~+80	-10~+80	-10~+80	-10~+80	-10~+80	-10~+80	-10~+80	-10~+80	-10~+80	-10~+80
Weight (g)	84	230	350	455	1,100	1,280	1,490	1,710	4,115	5,280	6,785

### How to order

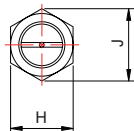
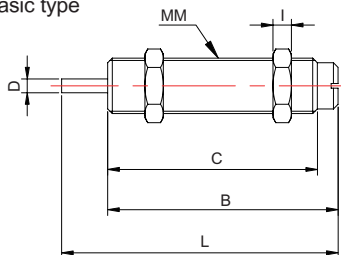
AC	08	06	—	1	—	N
Type	Bore	Stroke		Impact speed		Cap
 Non-adjustable : AC  Adjustable : AD	08 : φ 08 10 : φ 10 12 : φ 12 14 : φ 14 20 : φ 20 25 : φ 25 36 : φ 36 42 : φ 42 64 : φ 64	Please see stroke table		1 : High speed 2 : Medium speed 3 : Low speed		C : With cap N : Without cap

Note : Suited for  
AC 08~36

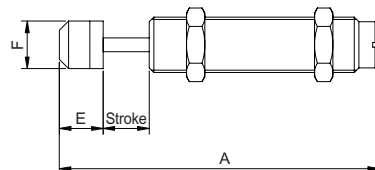
## AC0806 / AC1005 / AC1008 / AC1210

### Dimensional features

#### ● Basic type



#### ● With cap



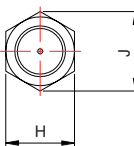
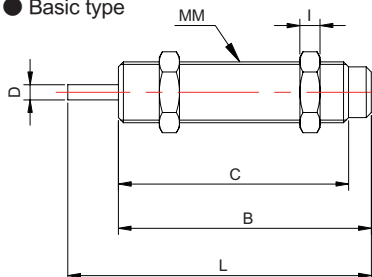
### Dimensional table

Mark Type	Basic type					With cap			Hexagon nut		
	MM	L	B	C	D	A	E	F	H	I	J
AC0806	M8x1.0	44	38	33	2.8	50	6	6.6	11	3	12.6
AC1005	M10x1.0	32.7	27.7	22.9	3	38.7	6	8.6	12.7	3	14.5
AC1008	M10x1.0	51	43	38	3	57	6	8.6	12.7	3	14.5
AC1210	M12x1.0	60	50	45.5	3	69.5	9.5	10.3	14	4	16

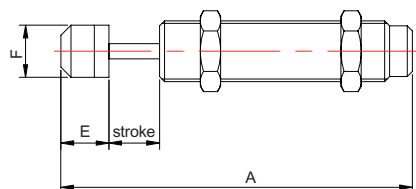
## AC1412 / AC1416 / AC2020 / AC2525

### Dimensional features

#### ● Basic type



#### ● With cap

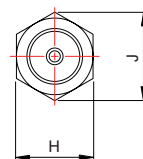
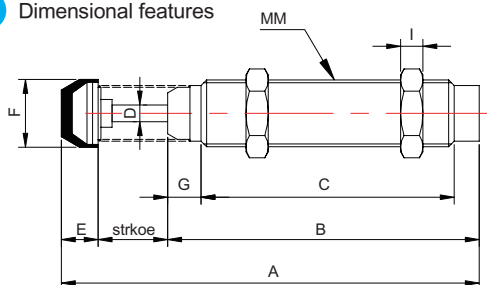


### Dimensional table

Mark Type	Basic type					With cap			Hexagon nut		
	MM	L	B	C	D	A	E	F	H	I	J
AC1412	M14x1.5	88	76	67	4	102.3	14.3	12	19	6	21.6
AC1416	M14x1.5	111	95	86	4	125.3	14.3	12	19	6	21.6
AC2020	M20x1.5	130	110	101	6	148	18	18	26	8	29.7
AC2525	M25x1.5	136	111	101	8	156.7	20.7	22	32	10	36.7

## AC2540 / AC3660

### Dimensional features



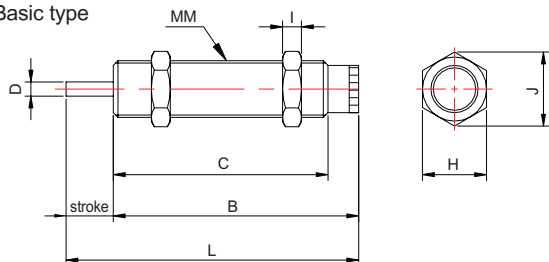
### Dimensional table

Mark Type	Basic type								Hexagon nut		
	MM	A	B	C	D	E	F	G	H	I	J
AC2540	M25x1.5	213	137	111	8	36	22	10	32	10	36.7
AC3660	M36x1.5	247.8	162	134	10	25.8	35	17	46	15	53

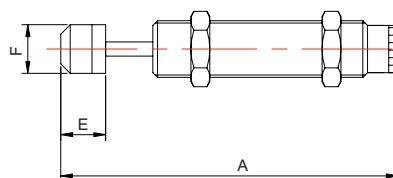
## AD1410 / AD2016 / AD2525

## Dimensional features

## ● Basic type



## ● With cap

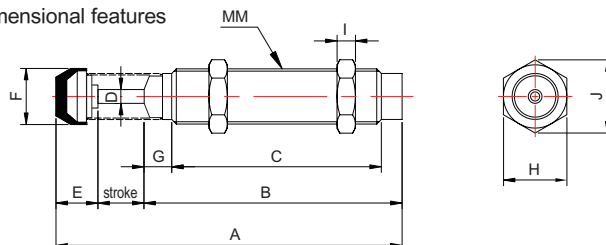


## Dimensional table

Mark Type	Basic type					With cap			Hexagon nut		
	MM	L	B	C	D	A	E	F	H	I	J
AD1410	M14x1.5	98.5	88.5	72.5	4	112.8	14.3	12	19	6	21.6
AD2016	M20x1.5	133	117	101	6	151	18	18	26	8	29.7
AD2525	M25x1.5	143.5	118.5	101	8	164.2	20.7	22	32	10	36.7

## AD2540 / AD3650

## Dimensional features

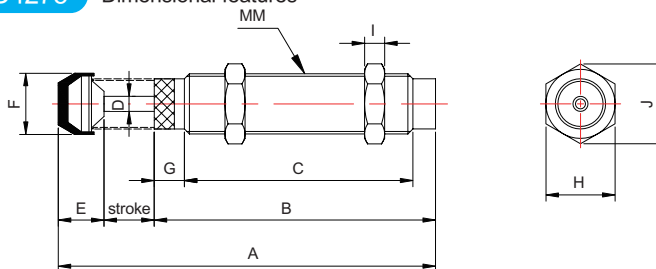


## Dimensional table

Mark Type	Basic type								Hexagon nut		
	MM	A	B	C	D	E	F	G	H	I	J
AD2540	M25x1.5	220.5	144.5	111	8	36	22	10	32	10	36.7
AD3650	M36x1.5	246.8	171	134	10	25.8	35	17	46	15	53

## AD4225 / AD4250 / AD4275

## Dimensional features

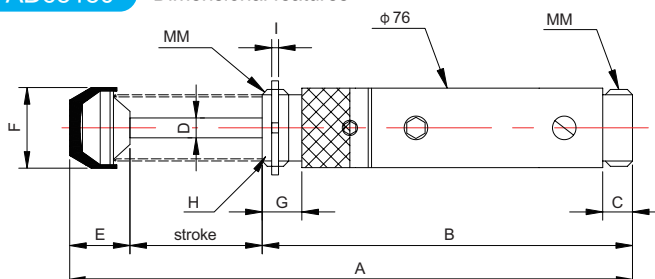


## Dimensional table

Mark Type	Basic type								Hexagon nut		
	MM	A	B	C	D	E	F	G	H	I	J
AD4225	M42x1.5	186.4	127.5	88	12	33.9	44.5	28.5	50	15	58
AD4250	M42x1.5	240.9	157	117.5	12	33.9	44.5	28.5	50	15	58
AD4275	M42x1.5	301.4	187.5	148	12	33.9	44.5	28.5	50	15	58

## AD64050 / AD64100 / AD65150

### Dimensional features



### Dimensional table

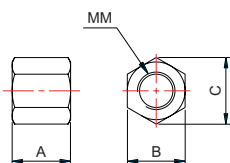
Mark Type	MM	Basic size							Hexagon nut	
		A	B	C	D	E	F	G	H	I
AD64050	UNF 2 1/2x12T	247.8	146	26	20	51.8	59	23	$\phi$ 76.2	9.4
AD64100	UNF 2 1/2x12T	347.8	196	26	20	51.8	59	23	$\phi$ 76.2	9.4
AD64150	UNF 2 1/2x12T	467.8	256	26	20	61.8	59	23	$\phi$ 76.2	9.4

### Locate stop nut

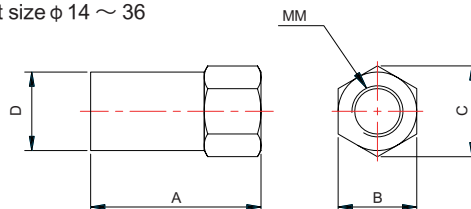
Hydraulic shock absorber locate stop nut size M8x1.0 to M36x1.5, there is holder F for each size, absorber with hexagon and without hexagon nut to use, adjustable and set absorber stroke.

### SC Locate stop nut / Dimensional features

● Port size  $\phi$  8 ~ 12



● Port size  $\phi$  14 ~ 36



### Dimensional table

Mark Type	A	B	C	$\phi$ D	MM	Suited for type
SC08	14	11	12.6	—	M8x1.0	AC0806
SC10	16	12.7	14.5	—	M10x1.0	AC1005 / AC1008
SC12	20	14	16	—	M12x1.0	AC1210
SC14	27	19	21.6	18	M14x1.5	AC1412 / AC1416 / AD1410
SC20	35	26	29.7	25	M20x1.5	AC2020 / AC2025
SC25	45	32	36.7	31.5	M25x1.5	AC2525 / AD2525
SC25L	65	32	36.7	31.5	M25x1.5	AC2540 / AD2540
SC36	80	46	53	45	M36x1.5	AC3660 / AD3650

### Dimensional table

Mark Type	A	B	C	D	E	$\phi$ F	MM	Suited for type
F36	60	41	45	16	2	8.5	M36x1.5	AC-3660 / AD3650
F42	60	41	45	16	2	8.5	M42x1.5	AC4225 / AD4250 / AD4275

### F Mounting plate / Dimensional features

