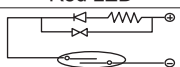




### Spencification

Type	NR501(length 1.5M)	NR505(length 5M)
Operating voltage	DC/AC 4 ~ 240V	
Switching current	AC : 4~44 mA , DC : 3~40 mA	
Switching rating	AC : 8 VA , DC : 5 W	
Internal doltage drop	2V	
Leakage current	0	
Delay time	< 1 ms	
Temperature	-10 ~ 60 °C	
Cable	φ 2.8 , 2C , PUR	
Enclosure calssification	IEC 529 IP 67	
Indicator lamp	Red LED	
Sensor circuit diagram		

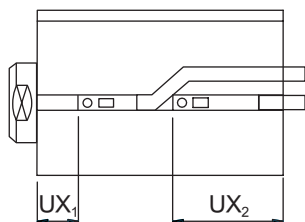
### Operating range tolerance

Cylinder mode	Bore	Operating range	Tolerance
10S-3R	Φ 20	12	1.5
	Φ 25	12	
	Φ 32	13	
	Φ 40	13	
	Φ 50	14	
	Φ 63	14	
ST2	Φ 50	11	1.5

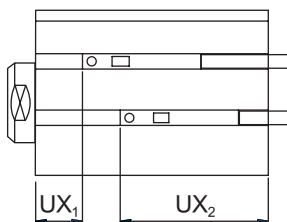
### Sensing point

Cylinder mode	Bore	UX <sub>1</sub>	UX <sub>2</sub>
10S-3R	Φ 20	5	31
	Φ 25	6.5	34.5
	Φ 32	8.5	35.5
	Φ 40	11.5	35
	Φ 50	16	37
	Φ 63	15	40
ST2	Φ 50	5.5	51.5
STS2	Φ 50	52.5	25.5

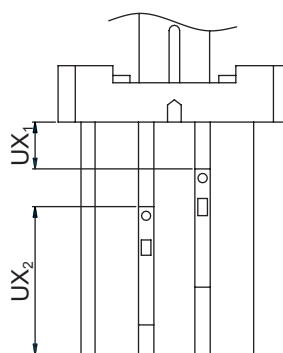
● 10S-3R φ 20



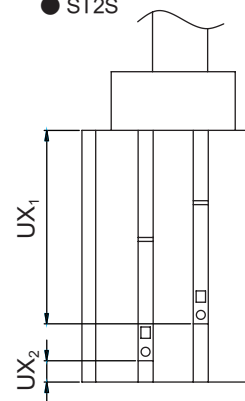
● 10S-3R φ 25 ~ 63



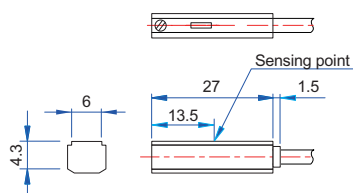
● ST2



● ST2S



### NR501 Dimension



### Cylinder mode

10S-3R、STS2、STD2、STB2、STS2S、STD2S、STB2S