

Features

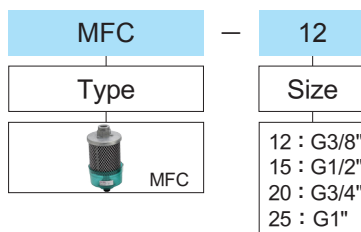
- Centralised unit for collecting and cleaning exhausted air.
- Ensures clean plant air and reduce noise pollution.
- Max. temperature : 60°C
- Noise reduction : over 35 decibel.
- Oil mist removal : over 99.9%.
- Oil release : thread.



Specifications

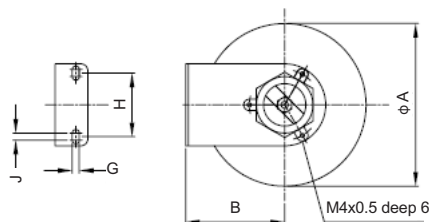
Type	MFC-12	MFC-15	MFC-20	MFC-25
Port size	G 3/8"	G 1/2"	G 3/4"	G 1"
Area	18	65	70	170
Max flow rate (l/mm)	350	1000	1100	3050
Weight (kg)	0.3	0.65	0.65	0.75
Mounting	S0105	S0106	S0106	S0107
Filter no.	MFC-08-50	MFC-10-75	MFC-20-75	MFC-25-100

How to order

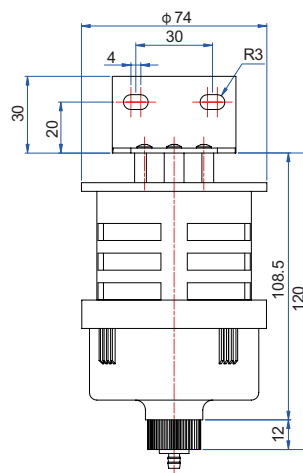
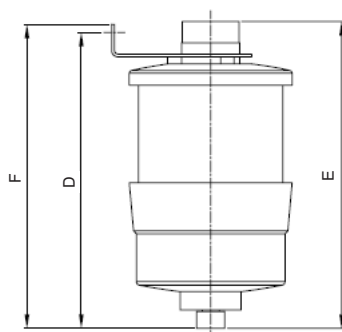
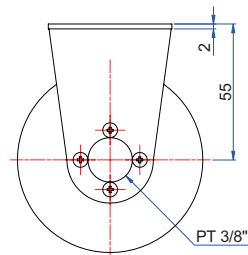


MFC Dimensional features

● Size G1/2" ~ 1"



● Size G3/8"



Mark Size	A	B	D	E	F	G	H	J
G1/2"	100	69	195	206	205	6.5	38.5	3.5
G3/4"	100	69	195	206	205	6.5	38.5	3.5
G1"	115	70	250	213	260	5	45	5