

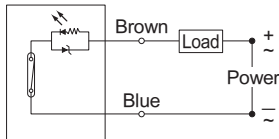


## Specification

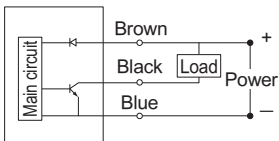
Type	KT20R	KT20N	KT20P
Wiring system	Two wire type	Three wire type	
Switching logic	SPST, Normally open	Solid state output, Normally open	
Sensor type	Reed switch	NPN Current sinking	PNP Current sourcing
Operating voltage	DC/AC 5 ~ 240V	DC 5 ~ 30V	
Switching current	100mA max.	200mA max.	
Switching rating (P=V×I)	10W max.	6W max.	
Internal voltage drop	3.5V max.	1.5V max.	
Indicator lamp	Green LED	Red LED	Green LED
Cable	φ 4 , 2C , PVC	φ 4 , 3C , PVC	
Temperature range		-10 ~ +70°C	
Enclosure classification		IEC 529 IP 67	
Protection circuit	None	Reserve polarity, short-circuit ; Power source reverse polarity ; Surge suppression	

## Connect diagram

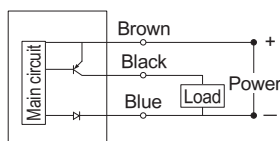
### ● KT20R



### ● DI106-N

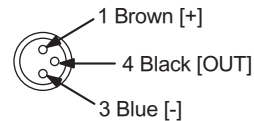


### ● DI106-P

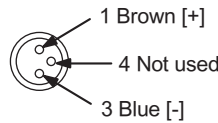


## Pinout

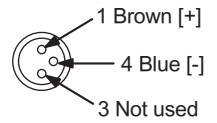
### ● Three wire type



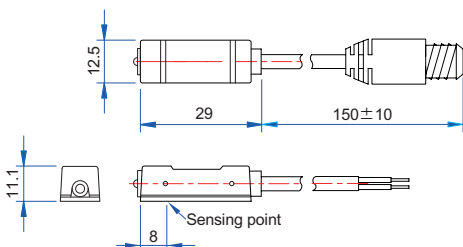
### ● Two wire type



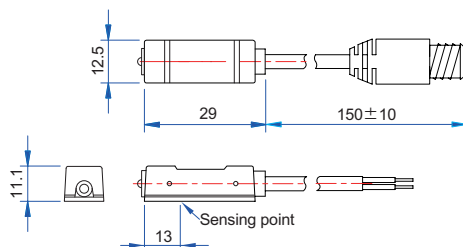
### ● Two wire type(EQD)



## KT20N / KT20P Standard and wiring / Dimension



## KT20R Standard and wiring / Dimension



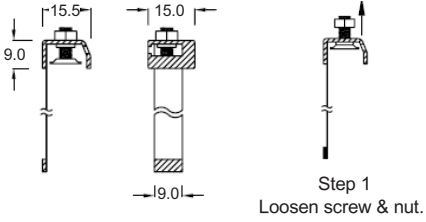
**Step 1**  
Loosen screw & nut.

**Step 2**  
Wrap the band around the cylinder & put the apex through the fastening hole.

**Step 3**  
Pull up mounting head & place sensor under the mounting head.

**Step 4**  
Swivel set screw to tighten band and fixing sensor. Finally swivel nut for steadying.

**PN-S** Self mounting clamps



**Step 1**  
Loosen screw & nut.

**Step 2**  
Wrap the band around the cylinder & put the apex through the fastening hole.

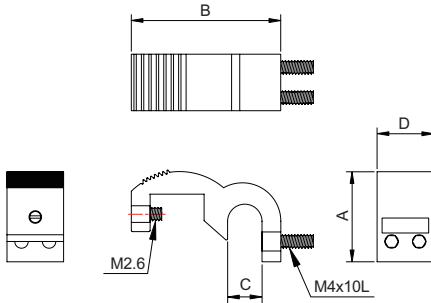
**Step 3**  
Pull up mounting head & place sensor under the mounting head.

**Step 4**  
Swivel set screw to tighten band and fixing sensor. Finally swivel nut for steadying.

**Cylinder mode**

10Z-6 series、10Z-8、10Z-7

**PM** Mounting part (bracket)



Size Type	A	B	C	D
PM-6	19.1	31.7	7.3	12
PM-8	18.4	33.7	9.3	12
PM-10	16.7	35.9	11.2	12
PM-12	20	35.5	11.5	12
PM-14	24	38.0	13.5	12
PM-16	24	40.0	15.5	12

**Cylinder mode**

AZ(φ 125~200)、DA-5R、DA-5RG