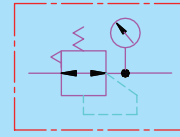




AIR FILTER

DSRV

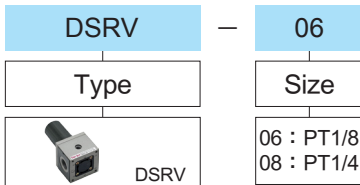


JIS symbol

Specifications

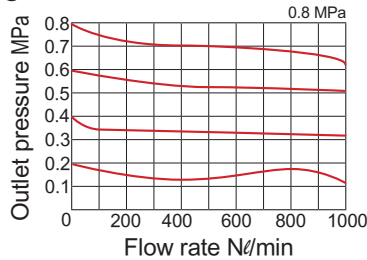
Type	DSRV-06	DSRV-08
Port size	Rc (PT) 1 / 8	Rc (PT) 1 / 4
The range of pressure	0.5 ~ 9.2 kgf/cm ²	
Proof pressure	16.3 kgf/cm ²	
The range of temperature	0 ~ +60 °C (No freezing)	

How to order

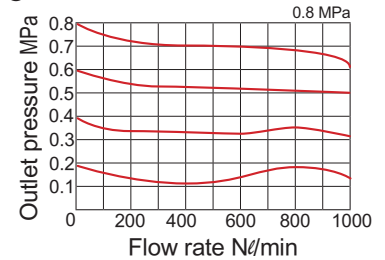


Flow characteristics

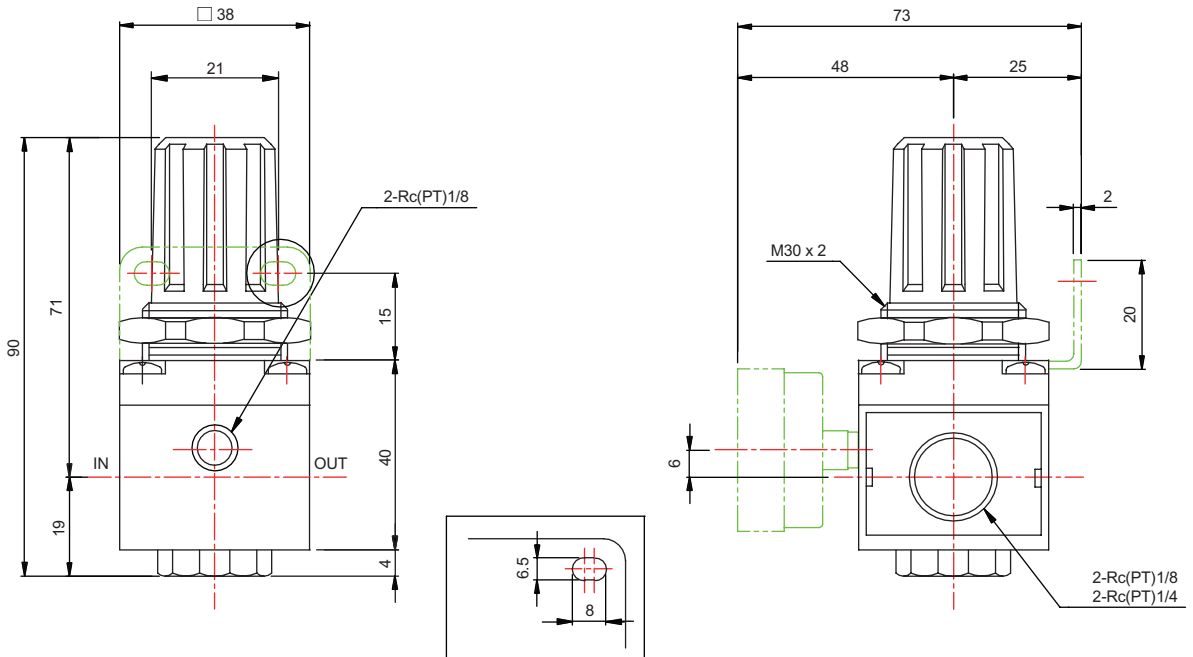
● DSRV-06



● DSRV-08



DSRV Dimensional features



Note : With auto drain