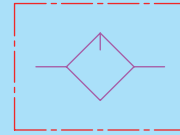


## LUBRICATOR

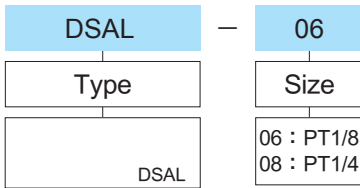
**DSAL**


JIS symbol

### Specifications

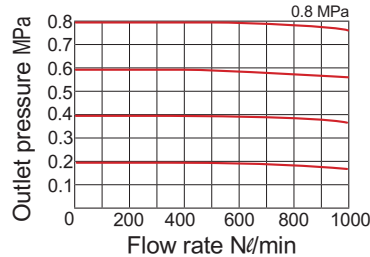
Type	DSAL-06	DSAL-08
Port size	Rc (PT) 1 / 8	Rc (PT) 1 / 4
Min. flow for oil drip	15 Nl/min	
The range of pressure	0.5 ~ 10.2 kgf/cm <sup>2</sup>	
Proof pressure	16.3 kgf/cm <sup>2</sup>	
The range of temperature	0 ~ +60 °C (No freezing)	
Filter capacity	25 c.c	

### How to order

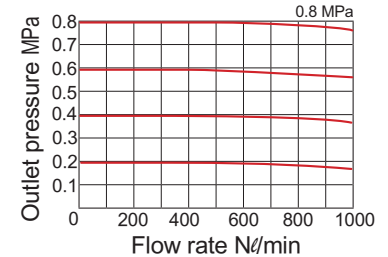


### Flow characteristics

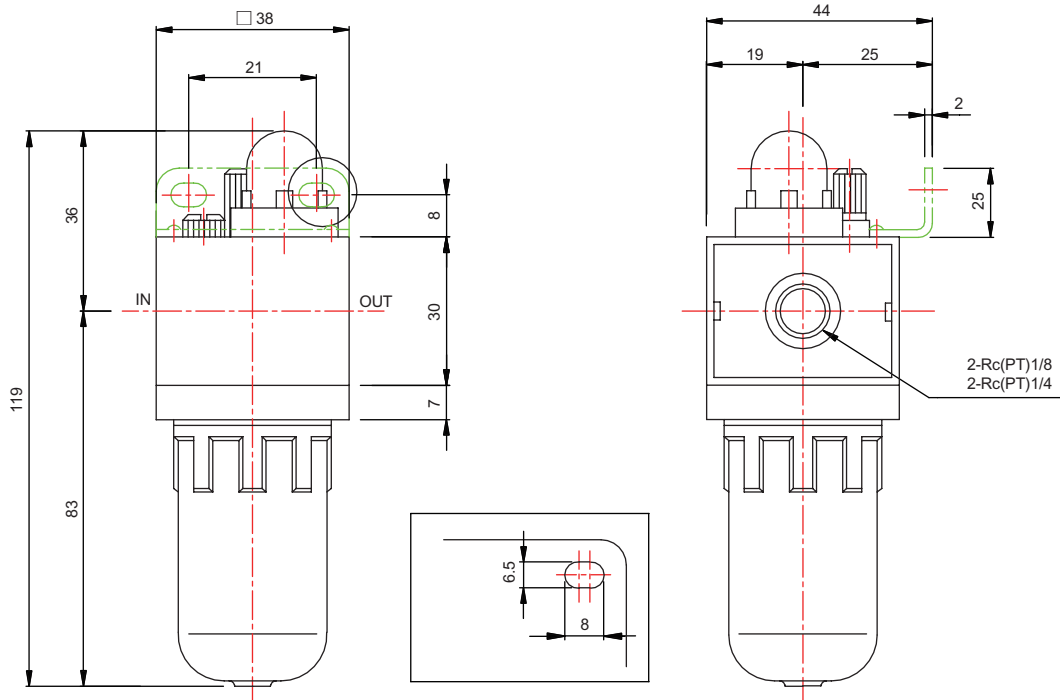
#### ● DSAL-06



#### ● DSAL-08



### DSAL Dimensional features



Note : with auto drain