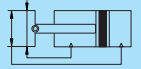


DOUBLE ACTING
MAGNETIC TYPE

DKQ



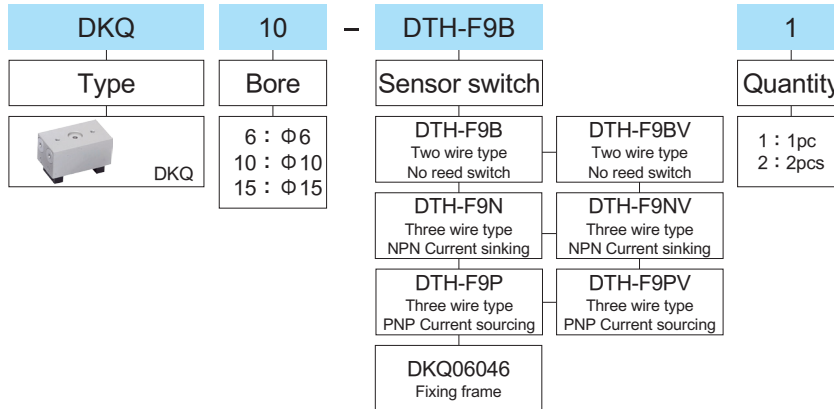
Features

- Integral assembly of jaws and pistons making miniature and light package.
- Precisely machined and anodized aluminium alloy construction to make it light and durable.
- Reed switch DTH available to easily control open and close positions.

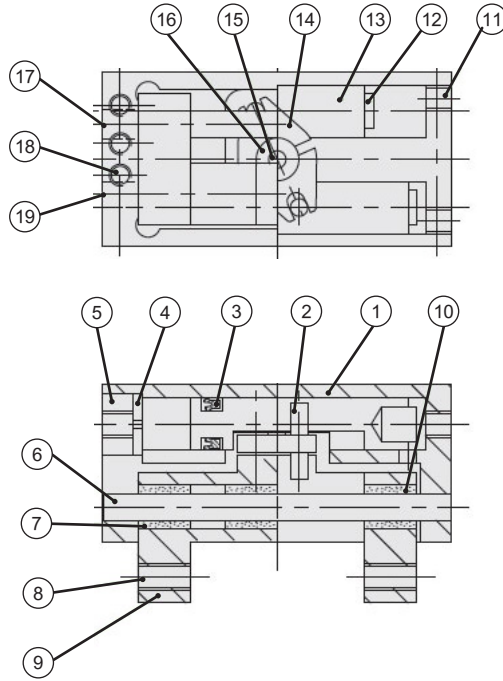
Specifications

Type	DKQ		
Bore	Φ6、10、15		
Power fluid	Filtered air with or without lubrication		
The range of pressure	3 ~ 7.1 kgf/cm ²		
The range of temperature	+5 ~ +60 °C		
Operating speed	90 (round / minute)		
Stroke	Φ6 : 10	Φ10 : 15	Φ15 : 20
Exhaust volume	Φ6 : 0.16	Φ10 : 0.63	Φ15 : 1.9
Max. length of attachment from finger end	Φ6 : 1.6	Φ10 : 2.5	Φ15 : 5.0
Fitting port	Φ6 : M3	Φ10 : M5	Φ15 : M5
Weight	Φ6 : 45g	Φ10 : 120g	Φ15 : 280g

How to order



DKQ Inside structure

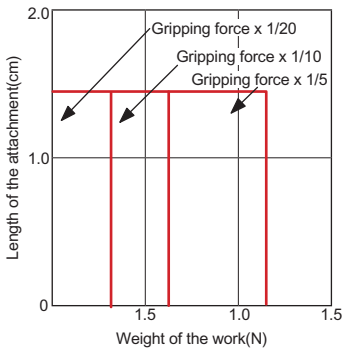


Parts list

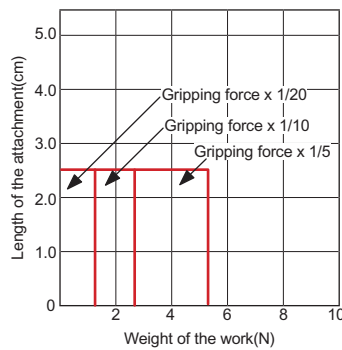
No.	Part name	Material	No.	Part name	Material	No.	Part name	Material
1	Barrel	A6061	7	Bush	Aluminium alloy	13	Piston	Copper alloy
2	Long steel pin	Bearing steel	8	Mounted screw	—	14	Driven block	SKD-11
3	Piston seal	NBR	9	Finger	A6061S - T6	15	Pin	—
4	Washer	A60601	10	Bush	Aluminium alloy	16	Bearing	—
5	Bush	Aluminium alloy	11	Fixed screw	—	17	Port (open)	—
6	Guide	SUJ-2	12	Magnet	Rare earth magnet	18	Adjustable Pin	carbon steel
						19	Port (closed)	—

Gripping force diagram

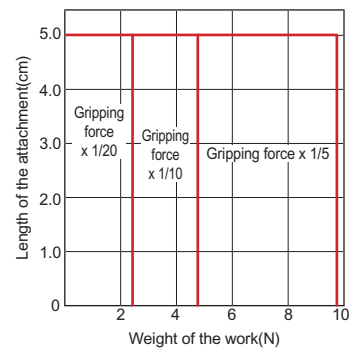
DKQ6



DKQ10

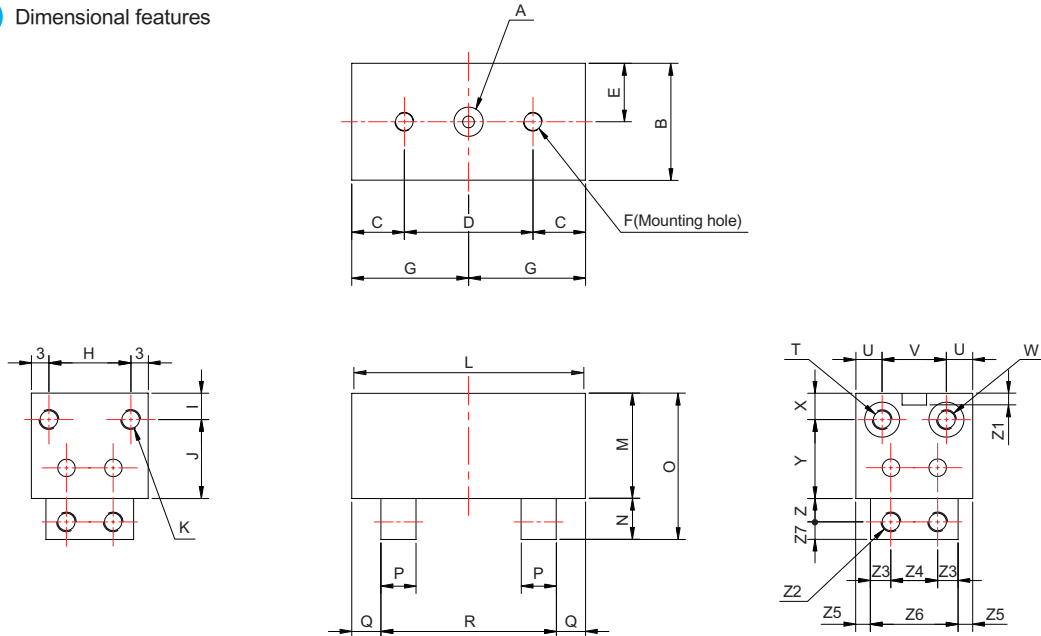


DKQ15



DKQ

DKQ Dimensional features



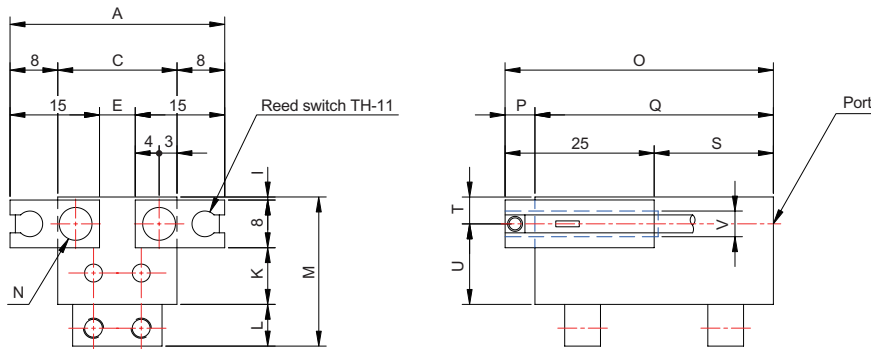
Dimensional table

Mark Bore	A	B	C	D	E	F	G	H	I	J	K	L	M	N	O	P	Q	R
Φ6	Φ5 ^{+0.02} ₀ deep 2	20	9	22±0.1	10	2-M3x0.5 deep 6	20	14	4.5	13.5	2-M3x0.5 deep 3	40	18	7	25	6	4 ~ 9(storke 5)	close 22 ~ open 32
Φ10	Φ8 ^{+0.02} ₀ deep 2	28	12.5	30±0.1	14	2-M4x0.7deep 8	27.5	22	7	17	2-M3x0.5 deep 4.5	55	24	10	34	8	4.5 ~ 12	close 31 ~ open 46
Φ15	Φ15 ^{+0.02} ₀ deep 2.5	40	14	40±0.1	20	2-M5x0.8 deep 8	34	34	10	23	2-M3x0.5 deep 4	68	33	12	45	10	5 ~ 15	close 38 ~ open 58

Mark Bore	T	U	V	W	X	Y	Z	Z1	Z2	Z3	Z4	Z5	Z6	Z7
Φ6	Air port for fingers' closing M3	4.5	11	Air port for fingers' opening M3	4.5	13.5	4	2	4-M3x0.5(Mounting hole fo finger)	3.5	8±0.2	2.5	15 ⁰ _{-0.1}	3
Φ10	Air port for fingers' closing M5	6	16	Air port for fingers' opening M5	7	17	6	2	4-M4x0.7(Mounting hole fo finger)	4	14±0.2	3	22 ⁰ _{-0.1}	4
Φ15	Air port for fingers' closing M5	9	22	Air port for fingers' opening M5	10	23	7	2.5	4-M5x0.8(Mounting hole fo finger)	6	18±0.2	5	30 ⁰ _{-0.1}	5

DKQ Mounting size of switches

● Reed switch is used to control open and closed of finger.



Dimensional table

Mark Bore	A	C	E	I	K	L	M	N	O	Q	S	T	U	V
Φ6	36	20	6	0.5	9.5	7	25	2-M3x0.5	45	40	20	4.5	13.5	4.3
Φ10	44	28	14	3	13	10	34	2-M5x0.8	60	55	35	7	17	4.3
Φ15	56	40	26	6	19	12	45	2-M5x0.8	73	68	48	10	23	4.3