

DOUBLE ACTING  
-SINGLE END ROD TYPE ..... **DA-5G** .....

DOUBLE ACTING  
-SINGLE END ROD TYPE ..... **DA-5RG** .....

### Features

- Due to the air turbulence phenomenon, a round rod always has a rotation symptom during the piston movement.
- The series cylinders provide square or hexagon rod, bush, and dust seal to prevent the rotation.

### Specification

Type	DA-5G	DA-5RG
Bore	Φ40、50、63、80、100	
Power fluid	Filtered air with or without lubrication	
The range of pressure	1 ~ 9.9 kgf/cm <sup>2</sup>	
The range of temperature	-20 ~ +80 °C (Don't freeze)	
Piston speed	Max. 1 m/s	
Material of cylinder barrel	Aluminium extrusion, Anodised 20 microns	

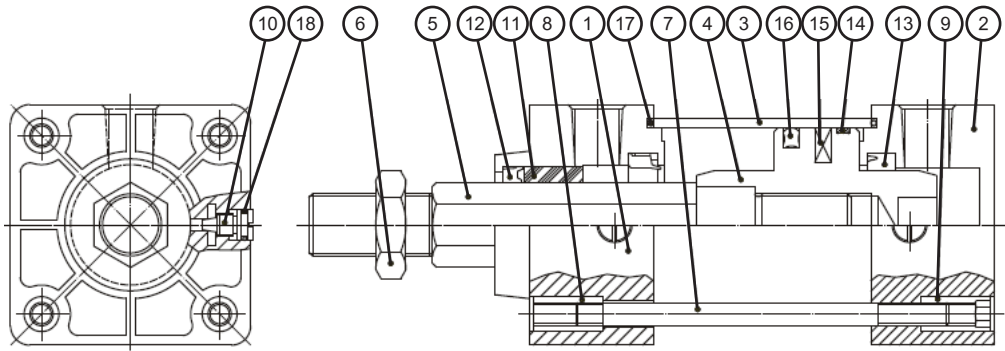
### How to order

DA-5G	SD	50	B	50	Y	A	1
Type	Holder	Bore	Cushion	Stroke	Accessories	Sensor switch	Quantity
DA-5G	SD	40 : Φ40 50 : Φ50 63 : Φ63 80 : Φ80 100 : Φ100	N : No cushion B : With cushion	Please see stroke table	Y : Y type	KT20R	1 : 1pc 2 : 2pcs
DA-5RG	FA				I : I type		
	FB				S : Oscillating eye		
	TC	LA			F : Compensating joint		
	CA	LB					
	CB	CB BK					
	CC	TC BK					

### Stroke table

Bore	Stroke (mm)	Stroke tolerance	Cushion length (mm)
Φ40、50、63	25,50,75,100,125,150,	S ≤ 500 : +2.0 ~ 0	20
Φ80、100	200,250,300,350,400	501 ≤ S ≤ 1250 : +3.2 ~ 0	25

**DA-5G** Double acting type / Inside structure



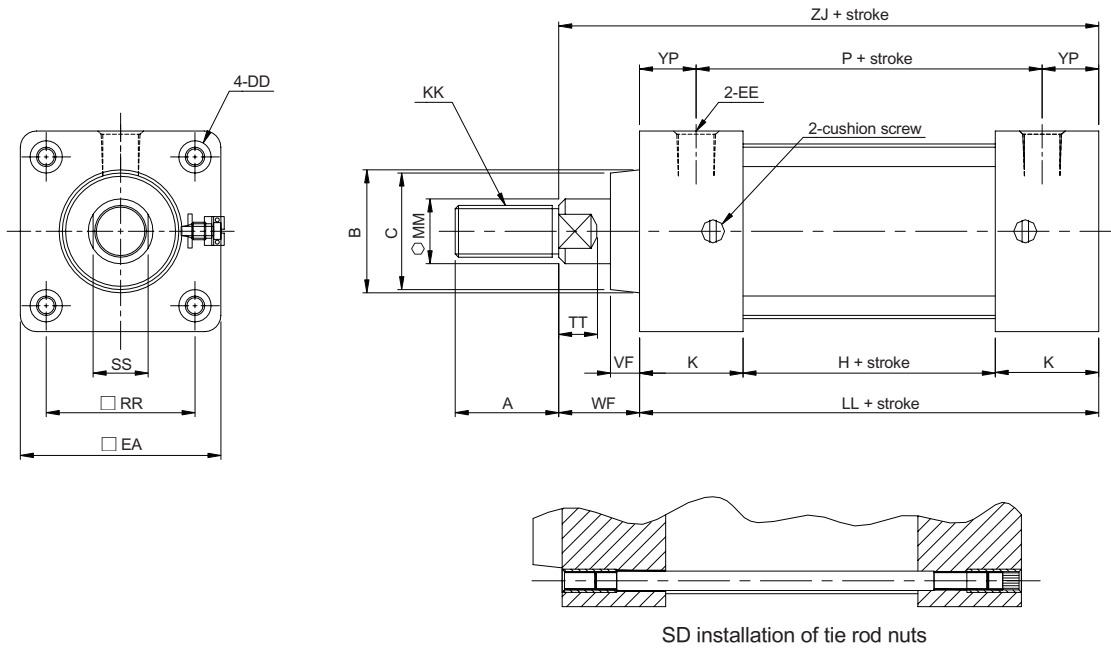
**Parts list**

No.	Part name	Quantity	No.	Part name	Quantity	No.	Part name	Quantity
1	Rod cover	1	7	Tie rod	4	13	Cushion seal	2
2	Head cover	1	8	Rod cover tie rod nut	4	14	Piston wearing	1
3	Aluminum tube	1	9	Head cover tie rod nut	4	15	Induction magnet	1
4	Piston	1	10	Cushion screw	2	16	Piston seal	1
5	Piston rod	1	11	Powder brozen bush	1	17	Cover O ring	2
6	Piston rod nut	1	12	Piston rod seal	1	18	Cushion screw ring	2

**Seal specification**

Name Quantity	Piston rod seal	Piston seal	Cushion seal	Cushion screw gasket	Cylinder gasket	Piston wearing ring
Bore	1	1	2	2	2	1
Φ 40	PGR14	APA40	DR20	SM5	SM40	WRP40
Φ 50	PGR19	APA50	CTU28	SM6	SM50	WRP50
Φ 63	PGR19	APA63	CTU28	SM6	SM63	WRP63
Φ 80	PGR23	APA80	CTU35	SM8	SM80	WRP80
Φ 100	PGR23	APA100	CTU35	SM8	SM100	WRP100

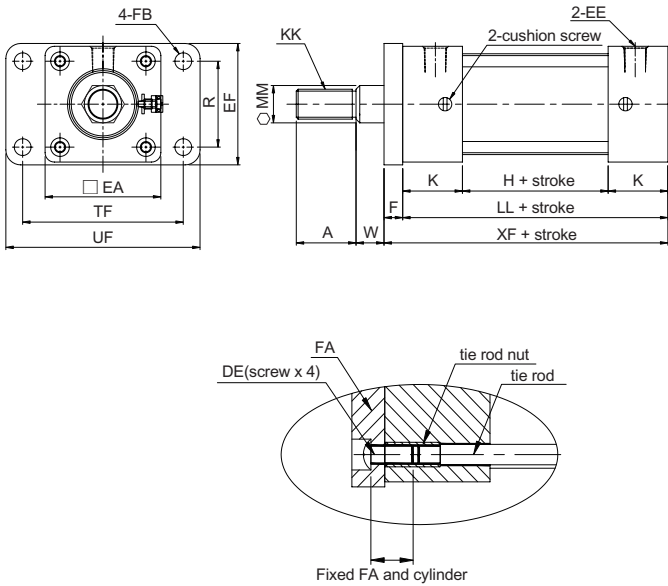
### DA-5G Double acting type / Dimensional features



### Dimensional table

Mark Bore	A	MM	KK	B	C	DD	EA	EE	H	K	LL	P	RR	SS	TT	VF	WF	YP	ZJ	Y
Φ 40	24	14	M12xP1.25	32	30	M6xP1.0	50	RC1/4	28	32	92	57	37	14	12	9	25	17.5	117	60
Φ 50	32	19	M16xP1.5	38	36	M6xP1.0	62	RC1/4	28	32	92	57	46	17	12	9	25	17.5	117	60
Φ 63	32	19	M16xP1.5	38	36	M8xP1.25	75	RC3/8	31	32	95	60	56	17	12	9	25	17.5	120	60
Φ 80	40	23	M20xP1.5	47	43	M10xP1.5	94	RC3/8	31	38	107	64	70	21	14	14	35	21.5	142	70
Φ 100	40	23	M20xP1.5	47	43	M10xP1.5	112	RC1/2	39	38	115	72	84	21	14	14	35	21.5	150	70

**FA** Accessories



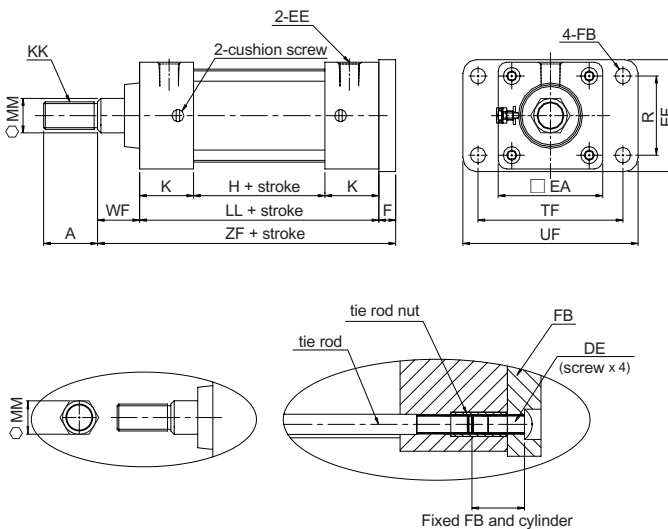
**Dimensional table**

Mark Bore	A	MM	KK	DE	EA
Φ40	24	14	M12xP1.25	M6xP1.0	50
Φ50	32	19	M16xP1.5	M6xP1.0	62
Φ63	32	19	M16xP1.5	M8xP1.25	75
Φ80	40	23	M20xP1.5	M10xP1.5	94
Φ100	40	23	M20xP1.5	M10xP1.5	112

Mark Bore	EE	EF	F	FB	H	K
Φ40	RC1/4	52	10	Φ7	28	32
Φ50	RC1/4	65	10	Φ9	28	32
Φ63	RC3/8	76	10	Φ9	31	32
Φ80	RC3/8	95	16	Φ12	31	38
Φ100	RC1/2	115	16	Φ12	39	38

Mark Bore	LL	R	TF	UF	W	XF
Φ40	92	36	70	91	15	103
Φ50	92	46	86	104	15	102
Φ63	95	56	98	116	15	105
Φ80	107	70	119	146	19	123
Φ100	115	84	138	165	19	131

**FB** Accessories



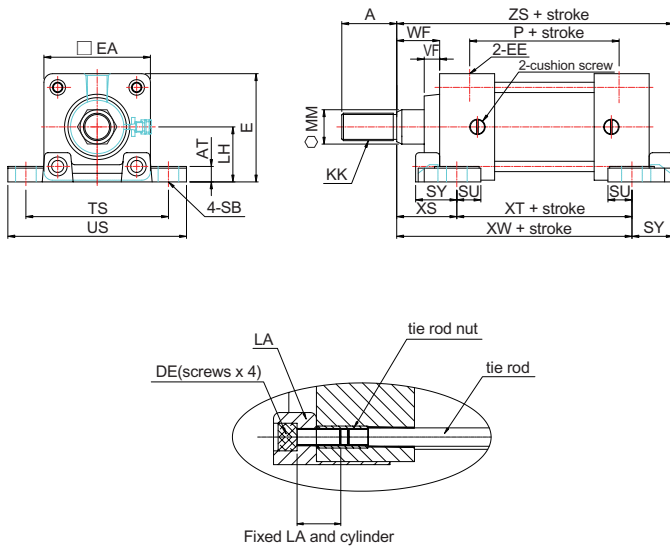
**Dimensional table**

Mark Bore	A	MM	KK	DE	EA
Φ40	24	16	M12xP1.25	M6xP1.0	50
Φ50	32	19	M16xP1.5	M6xP1.0	62
Φ63	32	19	M16xP1.5	M8xP1.25	75
Φ80	40	23	M20xP1.5	M10xP1.5	94
Φ100	40	23	M20xP1.5	M10xP1.5	112

Mark Bore	EE	EF	F	FB	H	K
Φ40	RC1/4	52	10	Φ7	28	32
Φ50	RC1/4	65	10	Φ9	28	32
Φ63	RC3/8	76	10	Φ9	31	32
Φ80	RC3/8	95	16	Φ12	31	38
Φ100	RC1/2	115	16	Φ12	39	38

Mark Bore	LL	R	TF	UF	WF	ZF
Φ40	92	36	70	91	25	127
Φ50	92	46	86	104	25	127
Φ63	95	56	98	116	25	130
Φ80	107	70	119	146	35	158
Φ100	115	84	138	165	35	166

**LA** Accessories



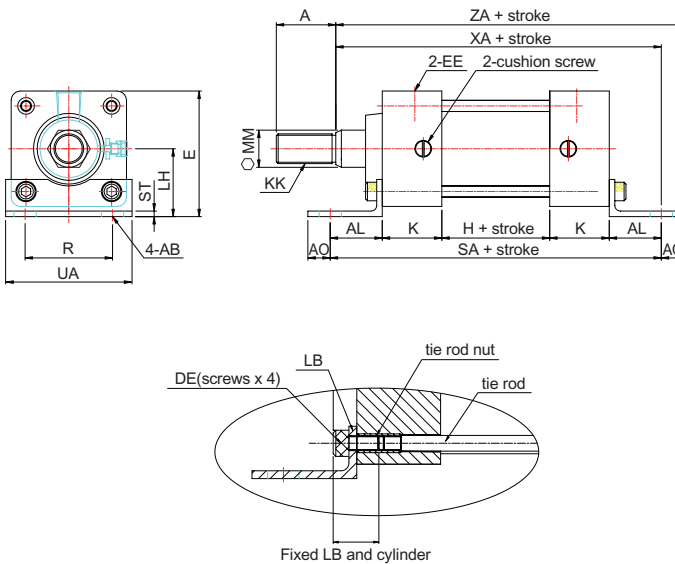
**Dimensional table**

Mark Bore	A	MM	KK	DE	E
Φ40	24	14	M12xP1.25	M6xP1.0	53
Φ50	32	19	M16xP1.5	M6xP1.0	63
Φ63	32	19	M16xP1.5	M8xP1.25	75.5
Φ80	40	23	M20xP1.5	M10xP1.5	95
Φ100	40	23	M20xP1.5	M10xP1.5	115

Mark Bore	EA	EE	LH	P	SB	ST	SU	SY
Φ40	50	RC1/4	27	57	12	8	14	23
Φ50	62	RC1/4	32	57	12	9	14	24
Φ63	75	RC3/8	38	60	12	9	14	26
Φ80	94	RC3/8	48	64	14	12	18	33
Φ100	114	RC1/2	58	72	14	14	18	37

Mark Bore	TS	US	VF	WF	XS	XT	XW	ZS
Φ40	70	91	9	25	35	72	107	129
Φ50	83	104	9	25	35	72	107	131
Φ63	95	116	9	25	35	75	110	136
Φ80	121	146	14	35	48	81	129	162
Φ100	140	165	14	35	48	89	137	174

**LB** Accessories



**Dimensional table**

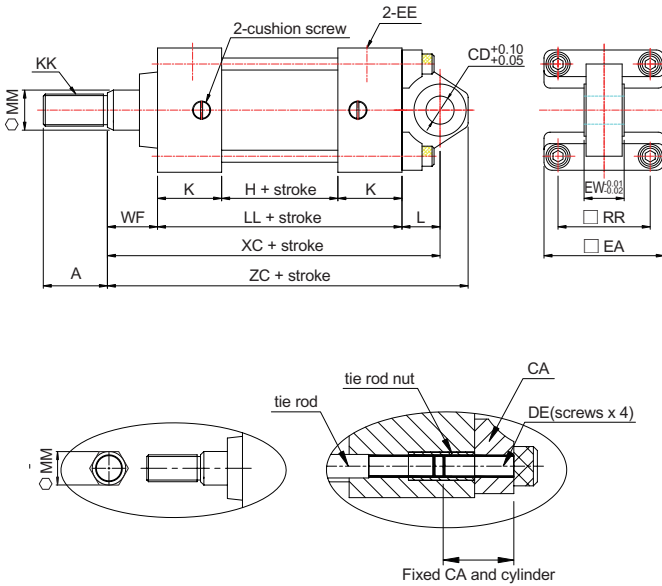
Mark Bore	A	MM	KK	AB	AE	AH
Φ40	24	14	M12xP1.25	Φ12	56	30
Φ50	32	19	M16xP1.5	Φ12	67.5	36.5
Φ63	32	19	M16xP1.5	Φ12	78.5	41
Φ80	40	23	M20xP1.5	Φ14	96	49
Φ100	40	23	M20xP1.5	Φ14	114	57

Mark Bore	AL	AO	AT	DE	EE	H
Φ40	23.5	12.5	3	M6xP1.0	RC1/4	28
Φ50	28	12	3	M6xP1.0	RC1/4	28
Φ63	31	14	3	M8xP1.25	RC3/8	31
Φ80	30	16	4	M10xP1.5	RC3/8	31
Φ100	30	16	4	M10xP1.5	RC1/2	39

Mark Bore	K	R	SA	UA	XA	ZA
Φ40	32	36	139	57	140.5	153
Φ50	32	47	148	68	145	157
Φ63	32	56	157	80	151	164
Φ80	38	70	167	97	172	188
Φ100	38	84	175	112	180	196

DA-5G

**CA** Accessories



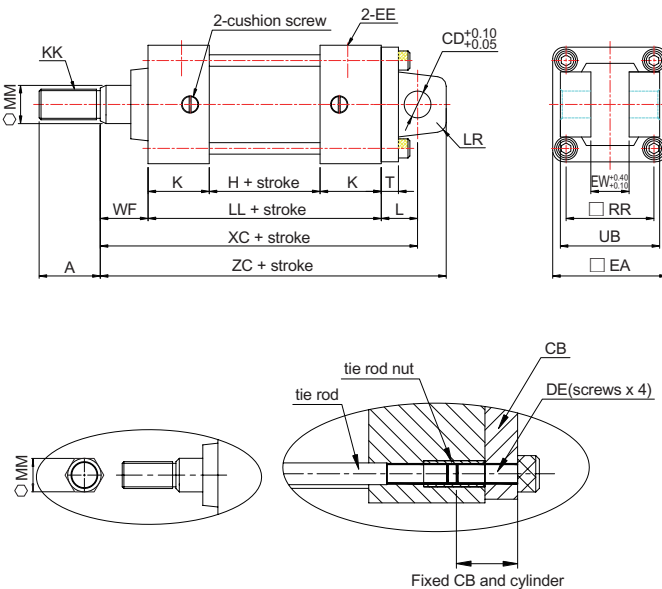
**Dimensional table**

Mark Bore	A	MM	KK	CD	DE
Φ40	24	14	M12xP1.25	Φ14	M6xP1.0
Φ50	32	19	M16xP1.5	Φ14	M6xP1.0
Φ63	32	19	M16xP1.5	Φ14	M8xP1.25
Φ80	40	23	M20xP1.5	Φ20	M10xP1.5
Φ100	40	23	M20xP1.5	Φ20	M10xP1.5

Mark Bore	EA	EE	EW	H	K	L
Φ40	50	RC1/4	20	28	32	19
Φ50	62	RC1/4	20	28	32	19
Φ63	75	RC3/8	20	31	32	19
Φ80	94	RC3/8	30	31	38	32
Φ100	112	RC1/2	30	39	38	32

Mark Bore	LL	RR	WF	XC	ZC
Φ40	92	37	25	136	150
Φ50	92	46	25	136	150
Φ63	95	56	25	139	153
Φ80	107	70	35	174	194
Φ100	115	84	35	182	202

**CB** Accessories



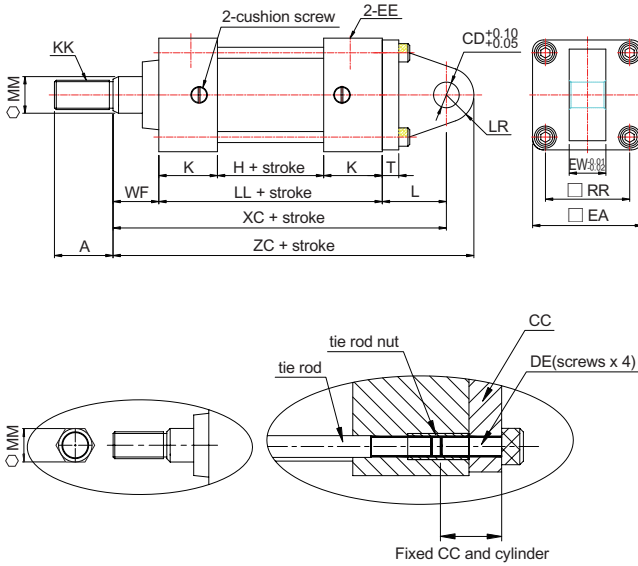
**Dimensional table**

Mark Bore	A	MM	KK	CD	DE
Φ40	24	14	M12xP1.25	Φ14	M6xP1.0
Φ50	32	19	M16xP1.5	Φ14	M6xP1.0
Φ63	32	19	M16xP1.5	Φ14	M8xP1.25
Φ80	40	23	M20xP1.5	Φ20	M10xP1.5
Φ100	40	23	M20xP1.5	Φ20	M10xP1.5

Mark Bore	EA	EE	EW	H	K	L	LL
Φ40	50	RC1/4	20	28	32	19	92
Φ50	62	RC1/4	20	28	32	19	92
Φ63	75	RC3/8	20	31	32	19	95
Φ80	94	RC3/8	30	31	38	32	107
Φ100	112	RC1/2	30	39	38	32	115

Mark Bore	LR	RR	T	UB	WF	XC	ZC
Φ40	16	37	9	44	25	136	151
Φ50	16	46	9	52	25	136	151
Φ63	16	56	9	52	25	139	154
Φ80	24	70	14	64	35	174	195
Φ100	24	84	14	64	35	182	203

**CC** Accessories



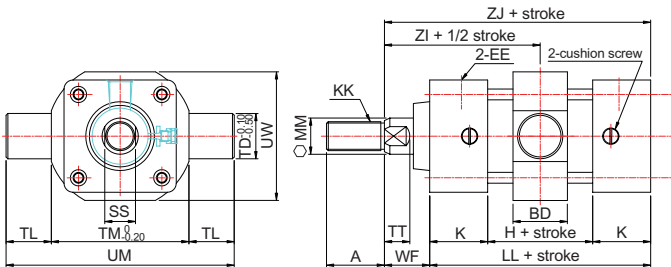
**Dimensional table**

Mark Bore	A	MM	KK	CD	DE
Φ40	24	14	M12xP1.25	Φ14	M6xP1.0
Φ50	32	19	M16xP1.5	Φ14	M6xP1.0
Φ63	32	19	M16xP1.5	Φ14	M8xP1.25
Φ80	40	23	M20xP1.5	Φ20	M10xP1.5
Φ100	40	23	M20xP1.5	Φ20	M10xP1.5

Mark Bore	EA	EE	EW	H	K	L	LL
Φ40	50	RC1/4	20	28	32	35	92
Φ50	62	RC1/4	20	28	32	35	92
Φ63	75	RC3/8	20	31	32	35	95
Φ80	94	RC3/8	30	31	38	50	107
Φ100	112	RC1/2	30	39	38	50	115

Mark Bore	LR	RR	T	WF	XC	ZC
Φ40	R16	37	9	25	152	168
Φ50	R16	46	9	25	152	168
Φ63	R16	56	9	25	155	171
Φ80	R24	70	14	35	192	216
Φ100	R24	84	14	35	200	224

**TC** Accessories



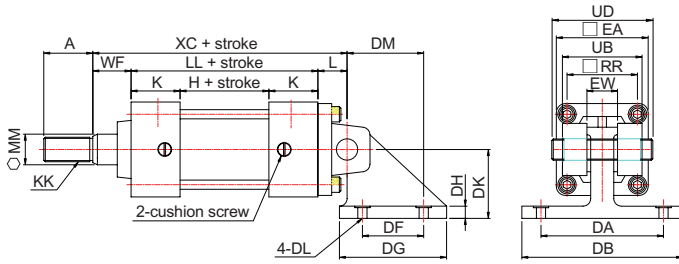
**Dimensional table**

Mark Bore	A	MM	KK	BD	EE
Φ32	22	12	M10xP1.25	30	RC1/8
Φ40	24	14	M12xP1.25	30	RC1/4
Φ50	32	19	M16xP1.5	30	RC1/4
Φ63	32	19	M16xP1.5	30	RC3/8
Φ80	40	23	M20xP1.5	35	RC3/8
Φ100	40	23	M20xP1.5	40	RC1/2

Mark Bore	H	K	LL	TD	TL	TM
Φ32	29	32	93	16	16	55
Φ40	28	32	92	25	25	63
Φ50	28	32	92	25	25	76
Φ63	31	32	95	25	25	88
Φ80	31	38	107	25	25	114
Φ100	39	38	115	25	25	132

Mark Bore	UM	UW	WF	ZI	ZJ
Φ32	87	52	25	71.5	118
Φ40	113	59	25	71	117
Φ50	126	71	25	71	117
Φ63	138	86	25	72.5	120
Φ80	164	104	35	88.5	142
Φ100	182	128	35	92.5	150

**CB BK** Accessories



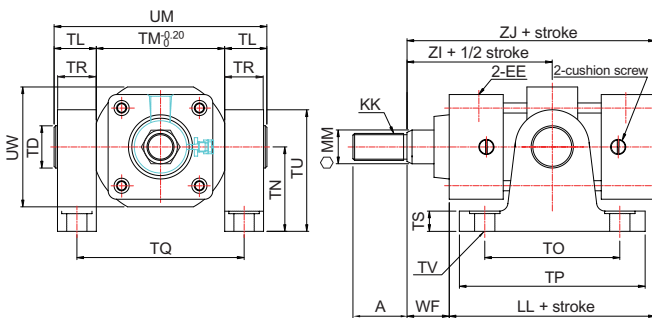
**Dimensional table**

Mark Bore	A	MM	KK	CD	DA	DB	DF
Φ32	22	12	M10xP1.25	Φ14	65	85	40
Φ40	24	14	M12xP1.25	Φ14	80	105	40
Φ50	32	19	M16xP1.5	Φ14	80	105	40
Φ63	32	19	M16xP1.5	Φ14	80	105	40
Φ80	40	23	M20xP1.5	Φ20	105	135	65
Φ100	40	23	M20xP1.5	Φ20	105	135	65

Mark Bore	DG	DH	DK	DL	DM	EA	EE	EW
Φ32	55	8	35	Φ9	45	44	RC1/8	20
Φ40	70	8	45	Φ11	50	50	RC1/4	20
Φ50	70	8	45	Φ11	50	62	RC1/4	20
Φ63	70	8	45	Φ11	50	75	RC3/8	20
Φ80	95	12	60	Φ14	70	94	RC3/8	30
Φ100	95	12	60	Φ14	70	112	RC1/2	30

Mark Bore	H	K	L	LL	RR	UB	UD	WF	XC
Φ32	29	32	19	93	33	44	58	25	137
Φ40	28	32	19	92	37	44	58	25	136
Φ50	28	32	19	92	46	52	66	25	136
Φ63	31	32	19	95	56	52	66	25	139
Φ80	31	38	32	107	70	64	78	35	174
Φ100	39	38	32	115	84	64	78	35	182

**TC BK** Accessories



**Dimensional table**

Mark Bore	A	MM	KK	EE	LL	SS	TD
Φ32	22	12	M10xP1.25	RC1/8	93	10	16
Φ40	24	14	M12xP1.25	RC1/4	92	14	25
Φ50	32	19	M16xP1.5	RC1/4	92	17	25
Φ63	32	19	M16xP1.5	RC3/8	95	17	25
Φ80	40	23	M20xP1.5	RC3/8	107	21	25
Φ100	40	23	M20xP1.5	RC1/2	115	21	25

Mark Bore	TL	TM	TN	TO	TP	TQ	TR
Φ32	16	55	40	60	80	70	15
Φ40	25	63	50	80	110	86	23
Φ50	25	76	50	80	110	99	23
Φ63	25	88	50	80	110	111	23
Φ80	25	114	70	85	120	137	23
Φ100	25	132	70	85	120	155	23

Mark Bore	TS	TU	TV	UM	UW	WF	ZI	ZJ
Φ32	12	56	9	87	52	25	71.5	118
Φ40	12	72	12	113	59	25	71	117
Φ50	12	72	12	126	71	25	71	117
Φ63	12	72	12	138	86	25	72.5	120
Φ80	12	92	14	164	104	35	88.5	142
Φ100	12	92	14	182	128	35	92.5	146

DA-5G