

## Norminal Size 7 and 12

Indirectly solenoid pilot actuated  
 Spool with pressure energized soft seals  
 Port size G1/4, up G1/2  
 Operating pressure : 2.5 to 10 bar  
 (see Parameters)



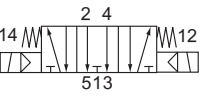
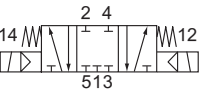

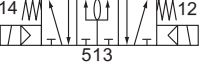
## Features

- Integrated sound absorption eliminating objectionable air noise
- Straight thru flow paths assuring high flow rates and fast response time
- Simple, compact yet most efficient design thanks to T-ring system
- Easy to service
- Uncomplicated and fast replacement of solenoids
- Compact design
- Standard manual override
- No overlap

## Description (Standard type)

- Solenoid valve for filtered, lubricator\* or non-lubricated air
- Flow direction : Fixed
- Temperature range : -10 °C ~ +60 °C
- Material - Body : Aluminum
- Material - Seat Seal : NBR

## Parameters

Symbol	Cat. No. Valve	Nominal size (ND)	Port size (G)	Operating pressure[bar]		Flow rate QN [l/min]	Switching time* approx.[ms]	Weight [kg]	Solenoid and Connector	
				min.	max.					
	Power consumption 3W (5VA)									
	2623200	7	G1/4	3	10	900	30	1.0	See solenoid and connector table	
	2623220	7	G3/8	3	10	900	30	1.0		
2623700	12	G1/2	2.5	10	2000	55	1.6			
	Power consumption 3W (5VA)									
	2623300	7	G1/4	3	10	900	30	1.0		
	2623320	7	G3/8	3	10	900	30	1.0		
	Power consumption 3W (5VA)									
	2623800	12	G1/2	2.5	10	2000	55	1.6		
	2623400	7	G1/4	3	10	900	30	1.0		
	2623420	7	G3/8	3	10	900	30	1.0		

\* Oil recommendation : Shell Hydrol DO 32, Shell Febis K32 (as of July 1992) or compatible oils with DVI values < 8 (DIN53521) and ISO viscosity class 32-46 (DIN51519)

• Option : Flat Manual override

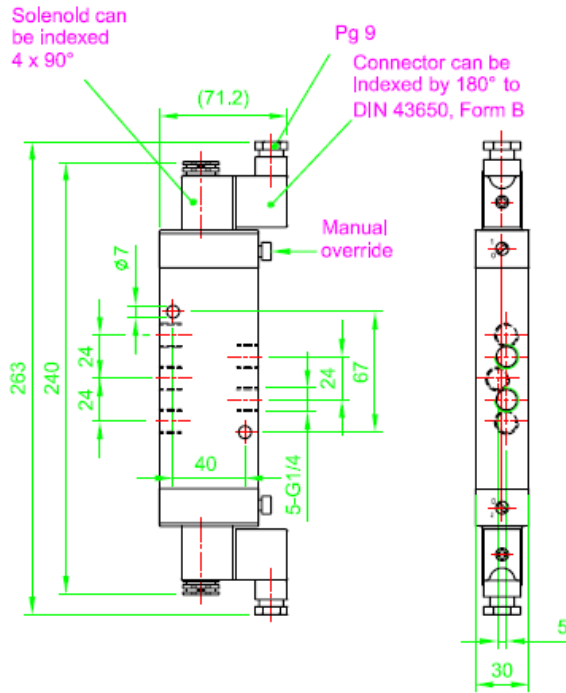
## How to Order

example : **2623300** · **3052** · **DC24V** X **5**

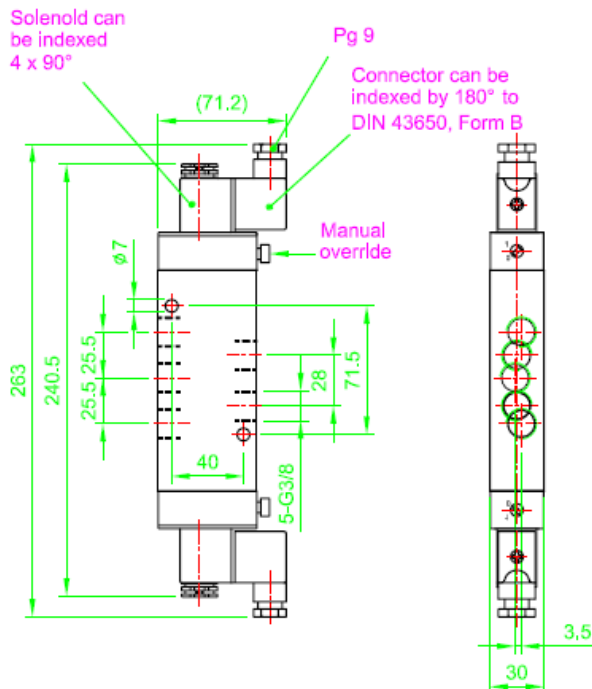
Valve
Solenoid
Voltage
Quantity

**Dimensional drawings**

Cat. No. : 2623200 / 2623300 / 2623400

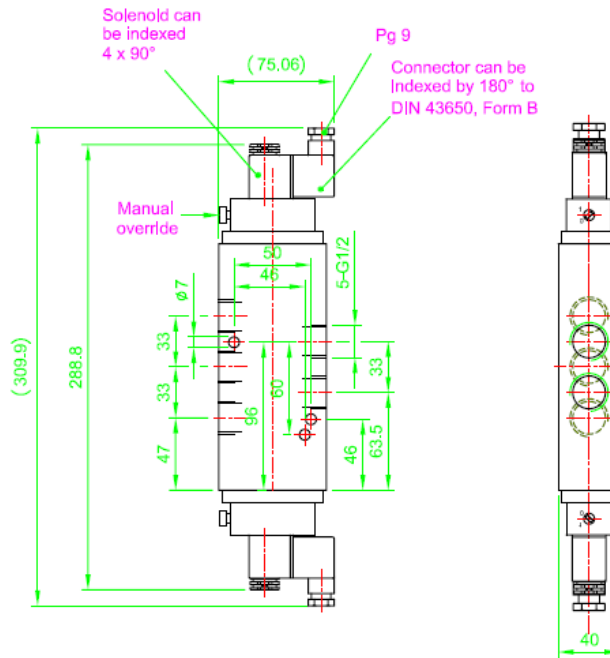


Cat. No. : 2623220 / 2623320 / 2623420



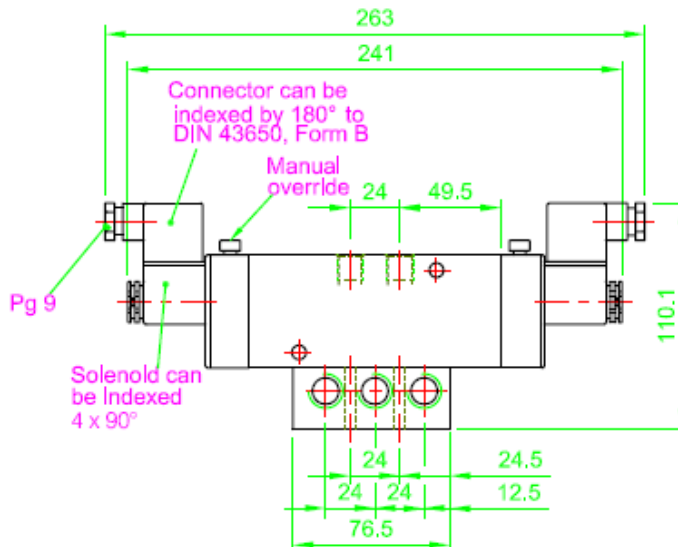
**Dimensional drawings**

Cat. No. : 2623700 / 2623800

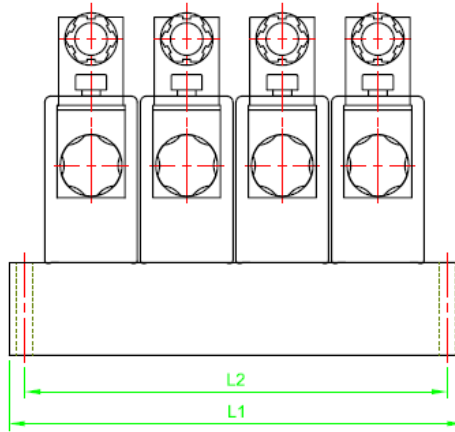


**Mounting assembly dimensional drawings**

Cat. No. : 2623200 / 2623300 / 2623400  
2623220 / 2623320 / 2623420



Cat. No. : 2623-No.



**Dimension table**

Cat. No.	for n-Valve	L1	L2	Cat. No.	for n-Valve	L1	L2
2623-02	2	85	75	2623-07	7	240	230
2623-03	3	116	106	2623-08	8	271	261
2623-04	4	147	137	2623-09	9	302	292
2623-05	5	178	168	2623-10	10	333	323
2623-06	6	209	199				