

## Normal Size 1.3

Directly solenoid actuated  
 Poppet valves, normally closed  
 Internal thread, battery type design  
 Port size G1/4, G1/8  
 Operating pressure : 10 bar Max.

## Features

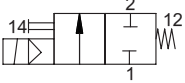
- Compact design
- Interchangeable solenoid system
- Also suited for coarse vacuum
- Exhaust port provided with silencer
- With manual override
- Mounting position optional



## Description (Standard type)

- Solenoid valve for filtered, lubricator or non-lubricated air
- Flow direction : Fixed
- Temperature range : -10 °C ~ +60 °C
- Material - Body : Aluminum
- Material - Seat Seal : NBR

## Parameters

Symbol	Cat. No. Valve	Nominal size (ND)	Port size (G)	Operating pressure[bar]*		Flow rate QN [l/min]	Switching time approx.[ms]		Weight [kg]	Solenoid and Connector
				min.	max.		on	off		
	Power consumption 3W (5VA)									
	9132930	1.3	G1/8	0	10	110	18	20	0.16	See solenoid and connector table
	9132950	1.3	G1/8	0	10	110	18	10	0.16	
9132830	1.3	G1/4	0	10	110	18	20	0.25		

- \* At pressure of 6 bar to VDI 3290, with DC type solenoid
- Option : Flat Manual override
  - Tight solenoid core tube with at least 0.2 to max. 0.5Nm

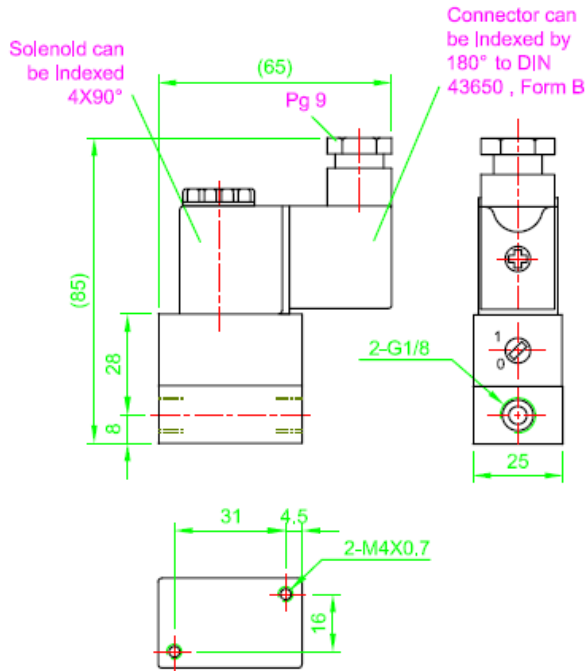
## How to Order

example : 9132930 · 3052 · DC24V X 5

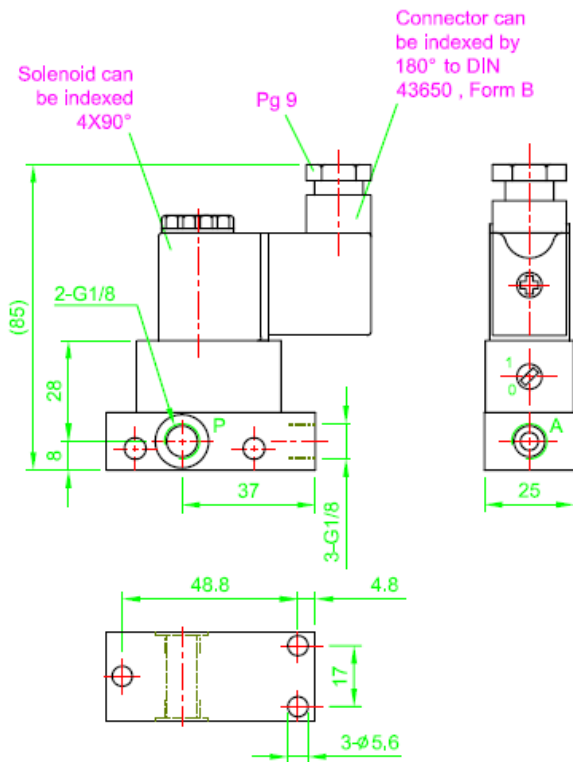
Valve
Solenoid
Voltage
Quantity

**Dimensional drawings**

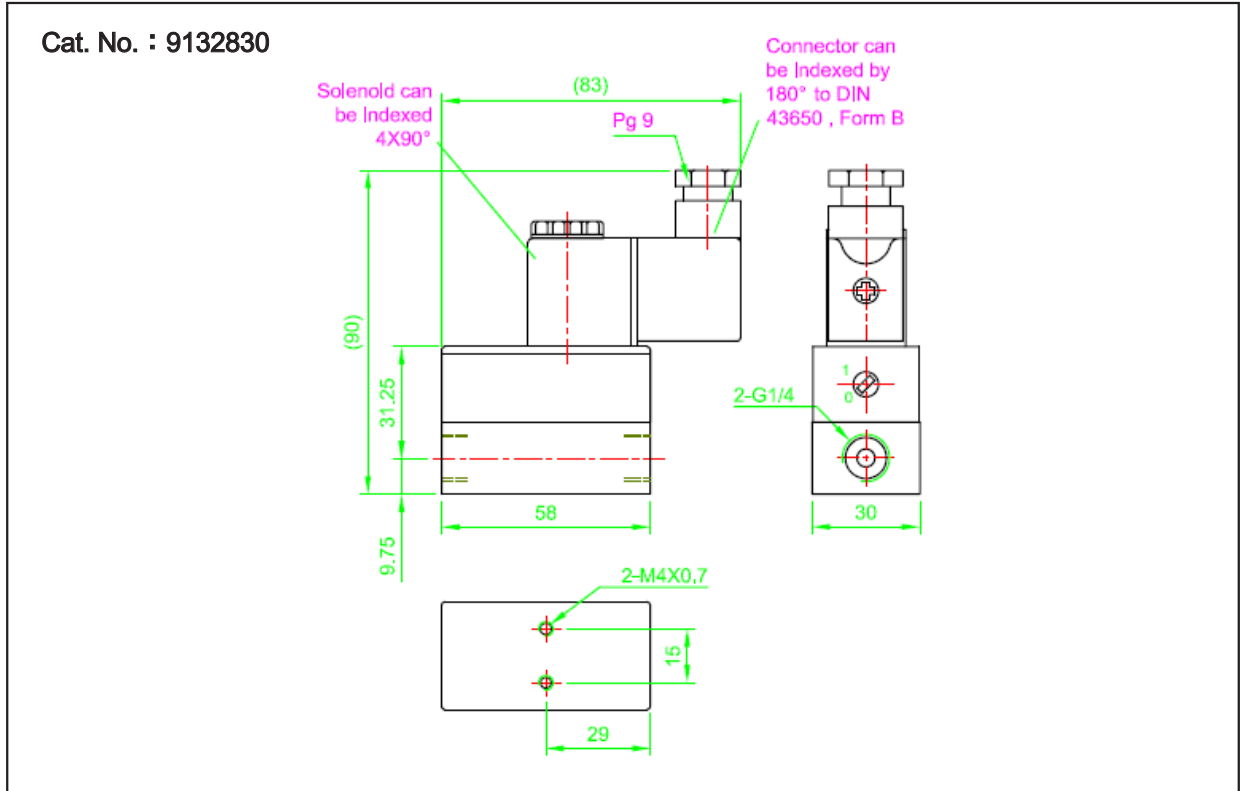
Cat. No. : 9132930



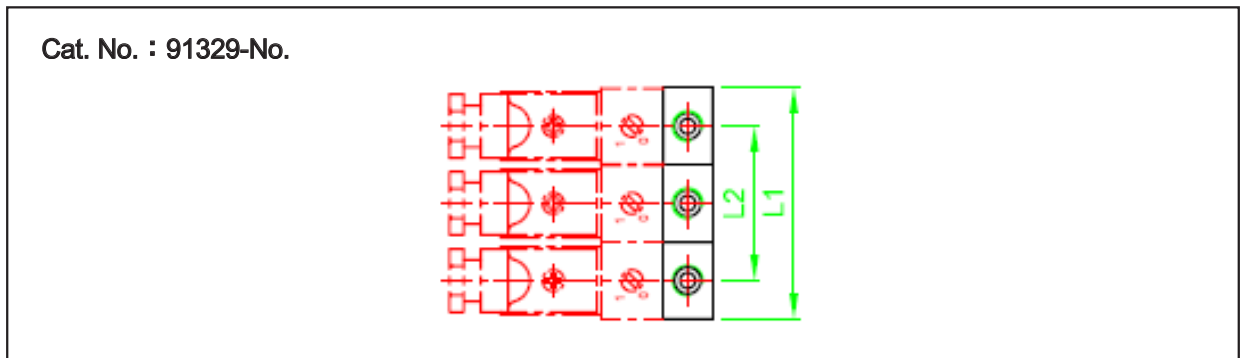
Cat. No. : 9132950



## Dimensional drawings



## Mounting assembly dimensional features



## Dimension table

Unit : mm

Cat. No.	Valve No.	L1	L2	Cat. No.	Valve No.	L1	L2
32950-01	1	25	—	32950-06	6	150	125
32950-02	2	50	25	32950-07	7	175	150
32950-03	3	75	50	32950-08	8	200	175
32950-04	4	100	75	32950-09	9	225	200
32950-05	5	125	100	32950-10	10	250	225