



DOUBLE ACTING PIVOT TYPE .....	<b>10Z-8</b>		
DOUBLE ACTING FRONT NOSE MOUNTING TYPE .....	<b>10Z-8A</b>		
DOUBLE ACTING DOUBLE END ROD TYPE .....	<b>10Z-8D</b>		
DOUBLE ACTING ADJUSTABLE FOWARD STROKE TYPE .....	<b>10Z-8N</b>		

Features

- 10Z-8 series cylinders according to ISO 6432 ( Φ20 ~ Φ25 ) ◦
- The series cylinders use for long stroke and high speed.

Specification

Type	10Z-8	10Z-8A	10Z-8D	10Z-8N
Bore	Φ20、25、32、40			
Power fluid	Filtered air with or without lubrication			
The range of pressure	1.02 ~ 10.5 kgf/cm <sup>2</sup>			
The range of temperature	-10 ~ +60 °C (Don't freeze)			
Material of cylinder barrel	Stainless steel			

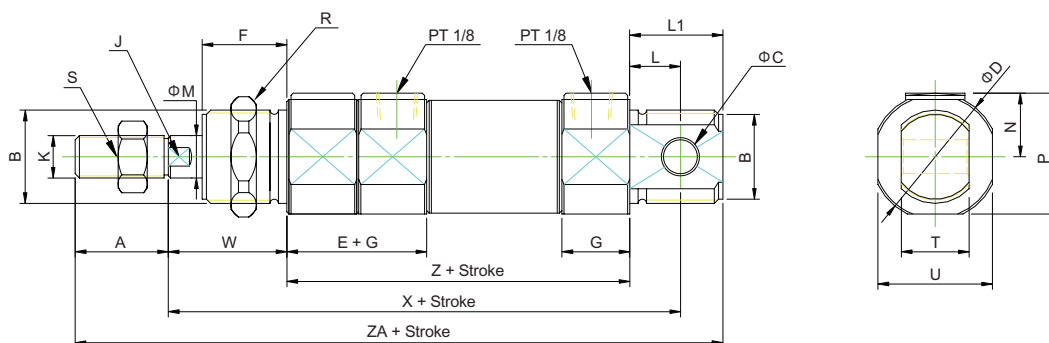
How to order

10Z-8	SD	25	B	50	A	-	Y	-	A	1
Type	Holder	Bore	Cushion	Stroke	Adjustable stroke		Accessories		Sensor switch	Quantity
 10Z-8	 SD	20 : Φ20 25 : Φ25 32 : Φ32 40 : Φ40	B : with cushion	Please see stroke table	A : Adjustable 25mm B : Adjustable 50mm		 Y : Y Type		DI106	1 : 1pc 2 : 2pcs
 10Z-8A	 FA						 I : I Type			
 10Z-8D	 FB						 S : Oscillating eye			
 10Z-8N	 LB						 F : Compensating joint			

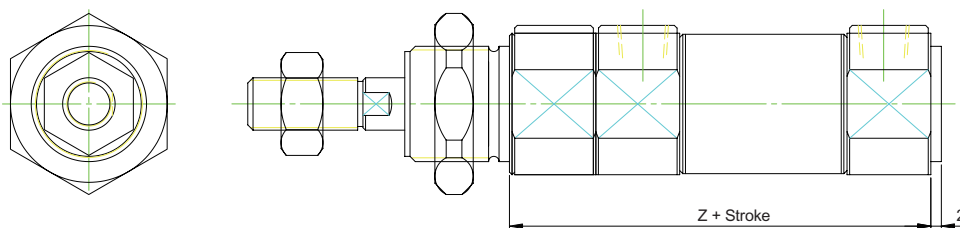
Stroke table

Bore	Stroke (mm)
Φ20、25、32、40	25,50,75,100,125,150,175,200,250,300

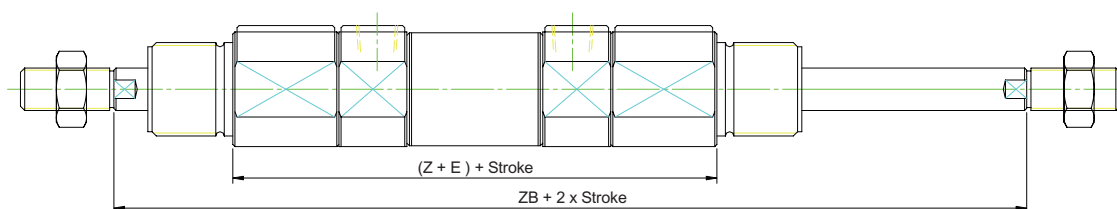
## 10Z-8 Double acting pivot type / Accessories



**10Z-8A** Double acting front nose mounting type / Accessories



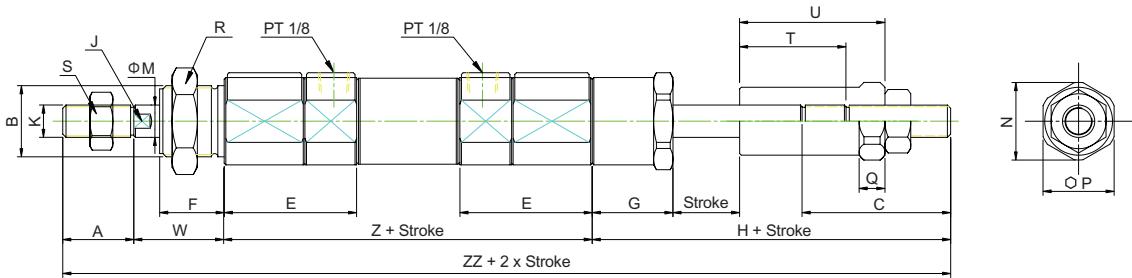
## 10Z-8D Double acting double end rod type / Accessories



## Dimensional Talbe

Mark Bore	A	B	C	D	E	F	G	J	K	L	L1	M	N	P	R	S	T	U	W	X	Z	ZA	ZB	
	Φ20	20	M22x1.5	8	30	25	18	15	7	M8x1.25	12	22	8	15	28.5	32	14	16	27	24	120	84	150	157
	Φ25	22	M22x1.5	8	30	25	20	16	9	M10x1.25	12	22	10	15	28.5	32	17	16	27	28	129	89	161	170
	Φ32	23	M27x2.0	10	38	25	20	16	10	M10x1.25	15	27	12	19	36.5	34	17	20	35	28	140	97	175	178
	Φ40	23	M33x2.0	10	45	25	20	16	14	M14x1.5	15	27	16	22.5	43.5	41	22	20	42	28	140	97	175	178

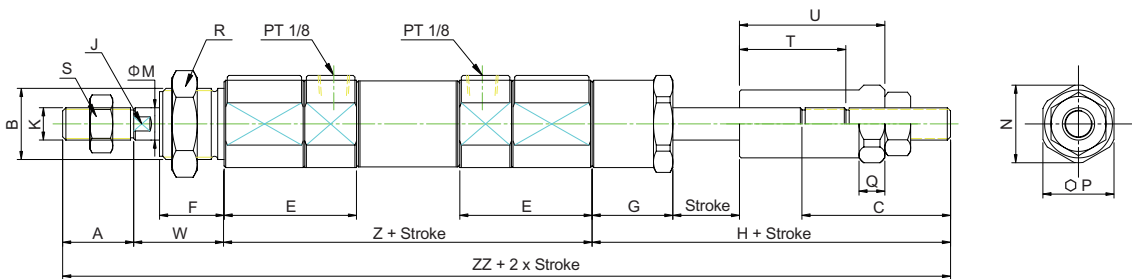
10Z-8N A : Adjustable 25mm / Dimensional features



Dimensional Talbe

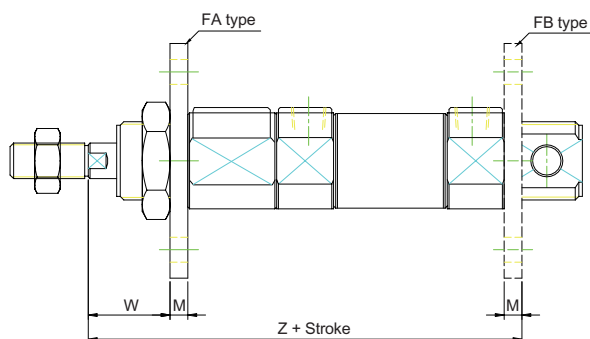
Mark Bore	A	B	C	E	F	G	H	J	K	M	N	P	Q	R	S	T	U	W	Z	ZZ
Φ20	20	M22x1.5	45	40	18	25	78	7	M8x1.25	8	24	22	8	27	14	33	43	24	109	231
Φ25	22	M22x1.5	46	41	20	25	79	9	M10x1.25	10	24	22	8	27	17	35	45	28	114	243
Φ32	23	M27x2.0	46	41	20	25	79	10	M10x1.25	12	29	27	10	35	17	35	45	28	122	252
Φ40	23	M33x2.0	50	41	20	25	83	14	M14x1.5	16	35	32	10	41	22	35	47	28	122	256

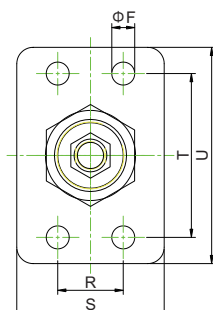
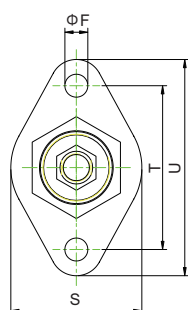
10Z-8N B : Adjustable 50mm / Dimensional features



Dimensional Talbe

Mark Bore	A	B	C	E	F	G	H	J	K	M	N	P	Q	R	S	T	U	W	Z	ZZ
Φ20	20	M22x1.5	70	40	18	25	103	7	M8x1.25	8	24	22	8	27	14	58	68	24	109	256
Φ25	22	M22x1.5	71	41	20	25	104	9	M10x1.25	10	24	22	8	27	17	60	70	28	114	268
Φ32	23	M27x2.0	71	41	20	25	104	10	M10x1.25	12	29	27	10	35	17	60	70	28	122	277
Φ40	23	M33x2.0	75	41	20	25	108	14	M14x1.5	16	35	32	10	41	22	60	72	28	122	281

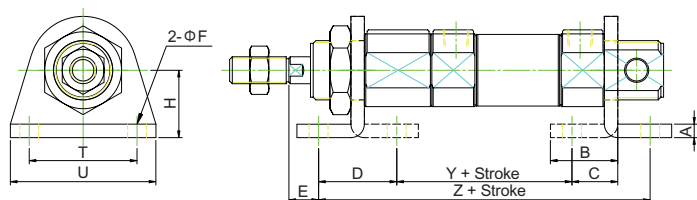
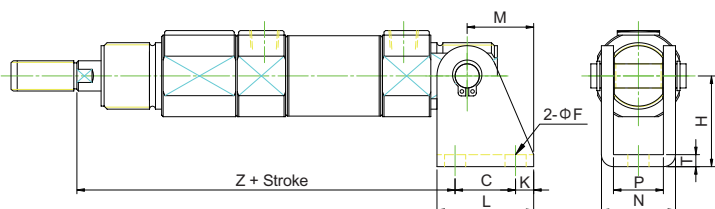
**FA (FB)** Double acting type / Accessories

 ● Bore  $\Phi 20 \sim \Phi 25$ 

 ● Bore  $\Phi 32 \sim \Phi 40$ 

**Dimensional Table** FA (FB) Type

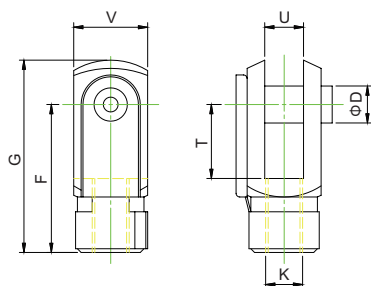
Mark Bore	E	F	M	R	T	U
$\Phi 20$	40	7	5	-	50	66
$\Phi 25$	40	7	5	-	50	66
$\Phi 32$	45	7	5	20	60	80
$\Phi 40$	50	9	5	30	80	100
Mark Bore	W	Z				
$\Phi 20$	19	113				
$\Phi 25$	23	124				
$\Phi 32$	23.5	131.5				
$\Phi 40$	23.5	131.5				

**Dimensional Table** LB Type

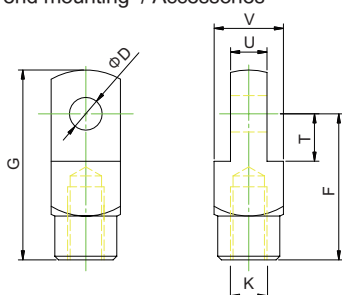
Mark Bore	A	B	C	D	E	F
$\Phi 20$	5	25	17	36	7	7
$\Phi 25$	5	25	17	40	11	7
$\Phi 32$	5	30	20	43.5	8	7
$\Phi 40$	5	30	20	43.5	8	9
Mark Bore	H	T	U	Y	Z	
$\Phi 20$	25	40	54	60	118	
$\Phi 25$	25	40	54	67	125	
$\Phi 32$	35	40	55	68	139	
$\Phi 40$	40	50	75	68	139	

**LB** Double acting type / Accessories

**CU** Double acting type / Accessories

**Dimensional Table** CU Type

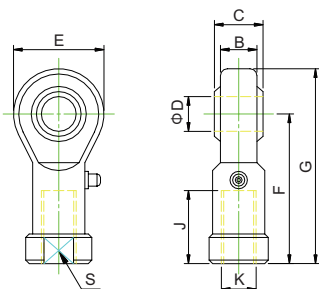
Mark Bore	C	F	H	K	L	M
$\Phi 20$	20	7	30	6	32	16
$\Phi 25$	20	7	30	6	32	16
$\Phi 32$	25	7	40	7.5	40	20
$\Phi 40$	25	9	40	7.5	40	20
Mark Bore	N	P	T	Z		
$\Phi 20$	24	16	4	116		
$\Phi 25$	24	16	4	127		
$\Phi 32$	28	20	4	137		
$\Phi 40$	28	20	4	137		

**Y** Rod Clevis (With Pin) / Accessories

**Dimensional Table**

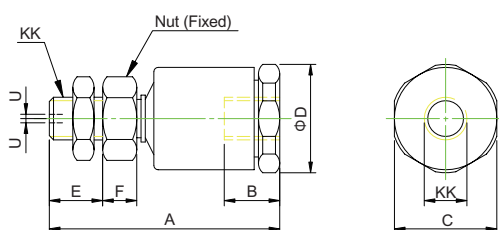
Mark Bore	D	F	G	K	T	U	V
Φ 20	8	32	42	M8x1.25	16	8	16
Φ 25 、 32	10	40	52	M10x1.25	20	10	20
Φ 40	10	45	58	M14x1.5	20	14	25.4

**I** I Rod end mounting / Accessories

**Dimensional Table**

Mark Bore	D	F	G	K	T	U	V
Φ 20	8	32	42	M8x1.25	11	8	16
Φ 25 、 32	10	40	52	M10x1.25	13	10	19
Φ 40	10	45	57	M14x1.5	13	14	25.4

**S** Oscillating Eye / Accessories

**Dimensional Table**

Mark Bore	B	C	D	E	F	G	J	K	S
Φ 20	9	12	8	22	36	47	17	M8x1.25	14
Φ 25 、 32	10.5	14	10	26	43	56	21	M10x1.25	17
Φ 40	13.5	19	14	34	57	74	27	M14x1.5	22

**F** Compensating Joint / Accessories

**Dimensional Table**

Mark Bore	A	B	C	D	E	F	K	N	U
Φ 20	47	11	19	20	13	6.5	M8x1.25	8	0.75
Φ 25 、 32	54	13	24	25.5	12.5	8	M10x1.25	9	0.75
Φ 40	71	17	29	31	15	11	M14x1.5	13	1