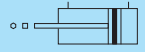




DOUBLE ACTING
STANDARD TYPE **10Z-6G**

DOUBLE ACTING
(WITH CUSHION) **10Z-6RG**



Features

Both hexagon or square rods are used on the series to prevent the rotation of ar ronnd rod cylinder.

Specification

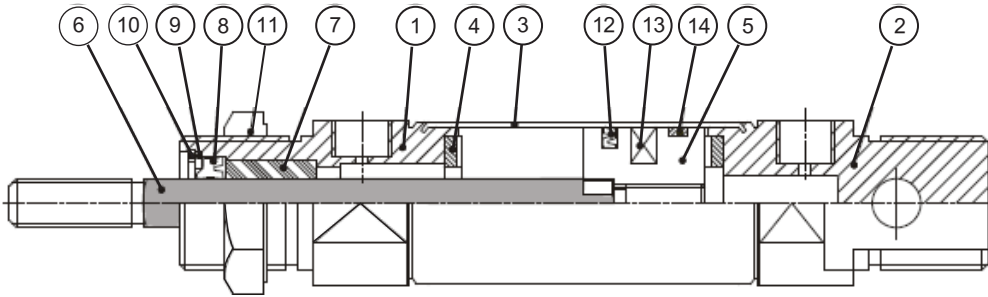
Type	10Z-6G	10Z-6RG
Bore	Φ 20、25、32、40	
Power fluid	Filtered air with or without lubrication	
The range of presure	0.51 ~ 9.9 kgf/cm ²	
The range of temperature	-20 ~ +80 °C (Don't freeze)	
Material of cylinder barrel	Stainless steel	

How to order

10Z-6G	SD	25	N	50	Y	A	1
Type	Holder	Bore	Cushion	Stroke	Accessories	Sensor switch	Quantity
 10Z-6G	 SD	20 : Φ20 25 : Φ25 32 : Φ32 40 : Φ40	N : No cushion	Please see stroke table	 Y : Y Type	DI106	1 : 1pc 2 : 2pcs
 10Z-6RG	 FA				 S : Oscillating eye		
	 FB				 F : Compensating joint		
	 LB						

Stroke table

Bore	Stroke (mm)
Φ 20、25、32、40	25,50,75,100,125,150

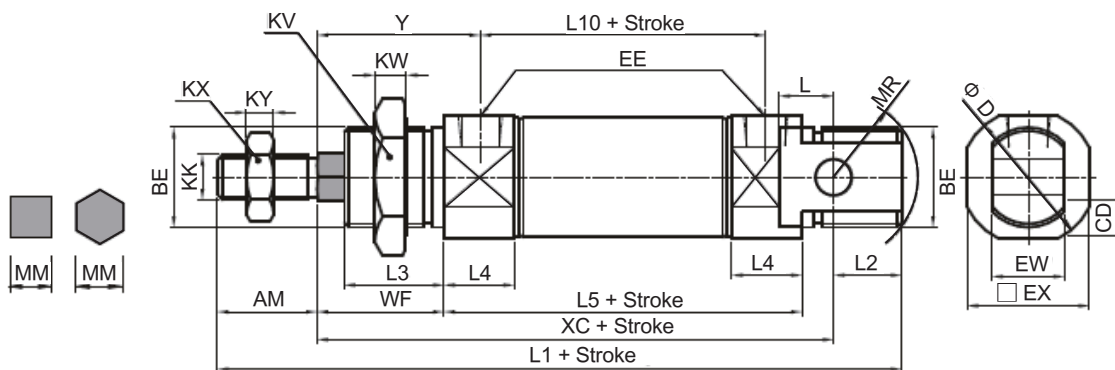
10Z-6G Inside structure

Parts list

No.	Part name	Quantity
1	Rod cover	1
2	Head cover	1
3	Aluminium tube	1
4	Cushion washer	2
5	Piston	1
6	Rod	1
7	Ball bearing	1
8	Rod seal	1
9	Dust	1
10	Snap ring	1
11	Rod nut	1
12	Piston packing	1
13	Magnet	1
14	Piston wearing	1

Seal specifications

Mark Bore	⑧ Piston rod packing		⑫ Piston packing		⑭ Piston wearing ring	
	Type	Quantity	Type	Quantity	Type	Quantity
Φ20	KC7.4	1	PZ 2013 N3571	1	WRP20	1
Φ25	KC7.4	1	PZ 2518 N3571	1	WRP25	1
Φ32	KC10	1	PZ 3210 N3571	1	WRP32	1
Φ40	PGR14	1	PZ 4031 N3571	1	WRP40	1

10Z-6G DOUBLE ACTING - STANDARD TYPE / Dimensional features

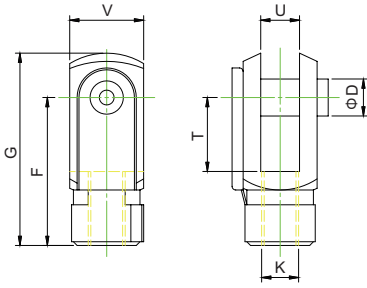


Dimensional Table

Mark Bore	AM	BE	CD(H9)	D(h1)	EX	EE	EW(d13)	KK	KV	KW
Φ20	20	M22x1.5	8	30	27	G 1/8	16	M8x1.25	26	7
Φ25	22	M22x1.5	8	30	27	G 1/8	16	M8x1.25	26	7
Φ32	22	M26x1.5	10	37	34	G 1/8	20	M10x1.25	32	8
Φ40	24	M32x2.0	10	46	42.5	G 1/4	20	M14x1.5	38	10

Mark Bore	KX	KY	L	L1	L2	L3	L4	L5	L7	L10	MM	MR	WF	XC	Y
Φ20	13	6.5	12	130	15	18	15.5	68	2.5	52	□ 7.4	18	24	95	32
Φ25	13	6.5	12	141	15	22	15.5	69	2.5	53	□ 7.4	18	28	104	36
Φ32	17	6	14.5	136	12	13	15	64	2.5	48	□ 10	20	23	102	31
Φ40	19	8	14.5	165	12	16	21.5	88	3	66	○ 14	20	26	129	37

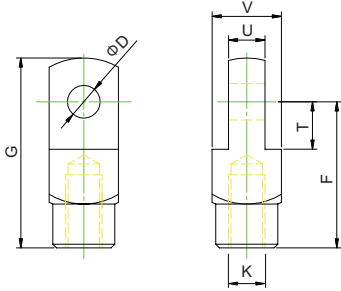
Y Rod clevis(with pin) / Accessories



Dimensional Talbe

Mark Bore	D	F	G	K	T	U	V
Φ 20	8	32	42	M8x1.25	16	8	16
Φ 25、32	10	40	52	M10x1.25	20	10	20
Φ 40	10	45	58	M14x1.5	20	14	25.4

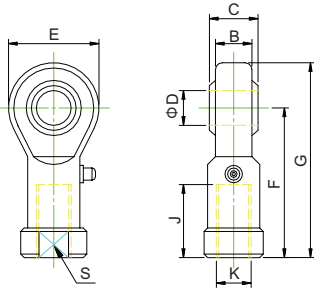
I I Rod end mounting / Accessories



Dimensional Talbe

Mark Bore	D	F	G	K	T	U	V
Φ 20	8	32	42	M8x1.25	11	8	16
Φ 25、32	10	40	52	M10x1.25	13	10	19
Φ 40	10	45	57	M14x1.5	13	14	25.4

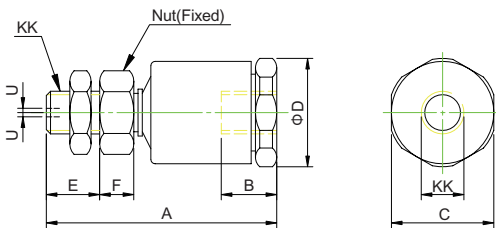
S Oscillating Eye / Accessories



Dimensional Talbe

Mark Bore	B	C	D	E	F	G	J	K	S
Φ 20	9	12	8	22	36	47	17	M8x1.25	14
Φ 25、32	10.5	14	10	26	43	56	21	M10x1.25	17
Φ 40	13.5	19	14	34	57	74	27	M14x1.5	22

F Compensating Joint / Accessories



Dimensional Talbe

Mark Bore	A	B	C	D	E	F	K	U
Φ 20	47	11	19	20	13	6.5	M8x1.25	0.75
Φ 25、32	54	13	24	25.5	12.5	8	M10x1.25	1
Φ 40	71	17	29	31	15	11	M14x1.5	1.15