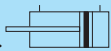







PIVOT TYPE.....	10H-6	
FRONT NOSE MOUNTING TYPE.....	10H-6A	
DOUBLE END ROD TYPE.....	10H-6D	
ADJUSTABLE FORWARD STROKE TYPE.....	10H-6N	


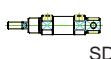
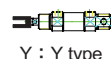

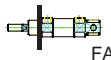
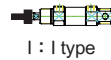

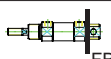


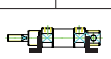
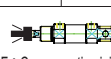
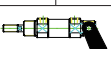
Features

- The cylinders usually are combined with AZO air-hydro converter to provide a smooth motion by using hydraulic fluid instead of air due to the un-stable compressed feature.

Specification

Type	10H-6	10H-6A	10H-6D	10H-6N
Bore	Φ 20、25、32、40			
Power fluid	Filtered air with or without lubrication			
The range of pressure	1.02 ~ 10.5 kgf/cm ²			
The range of temperature	-5 ~ +60 °C (Don't freeze)			
Piston speed	3 ~ 300 mm/s			
Material of cylinder barrel	Stainless steel			

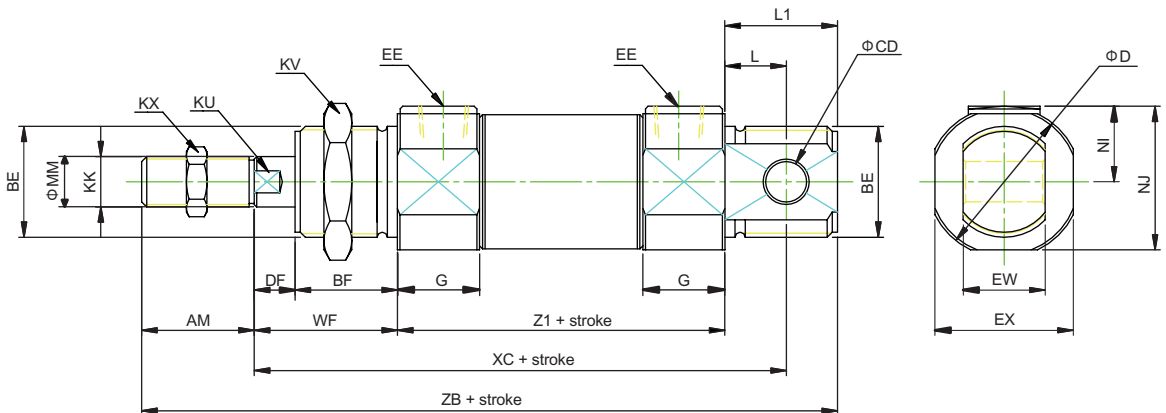
How to order

10H-6	SD	25	B	50	B	3	Y	A	1
Type	Holder	Bore	Cushion	Stroke	Adjustable stroke	Oil in	Accessories	Sensor switch	Quantity
 10H-6	 SD	20 : Φ 20 25 : Φ 25 32 : Φ 32 40 : Φ 40	N : No cushion B : With cushion	Please see stroke table	No code : standard type A : Adjustable 25mm B : Adjustable 50mm	1.Oil in rod side 2.Oil in head side 3.Oil in both side	 Y : Y type	DI106	1 : 1pc 2 : 2pcs
 10H-6A	 FA						 I : I type		
 10H-6D	 FB						 S : Oscillating eye		
 10H-6N	 LB						 F : Compensating joint		
									

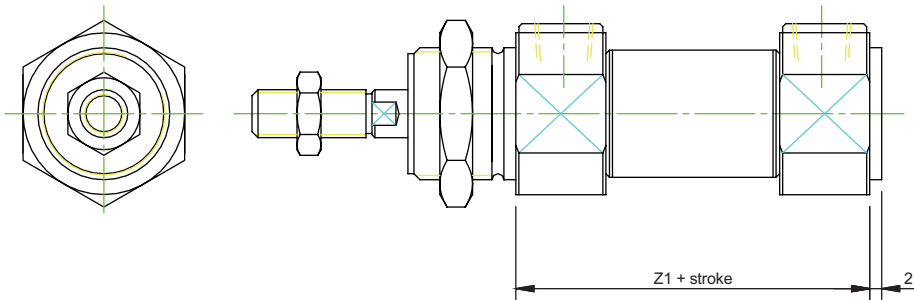
Stroke table

Bore	Stroke (mm)
Φ 20、25、32、40	25,50,75,100,125,150,175,200,250,300

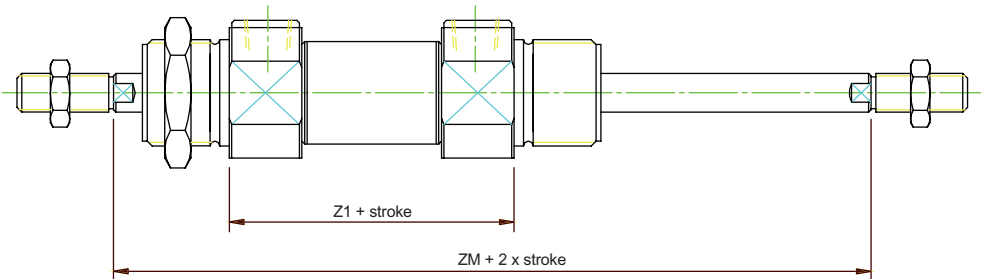
10H-6 Pivot type / Dimensional features



10H-6A Front nose mounting type / Dimensional features



10H-6D Double end rod type / Dimensional features

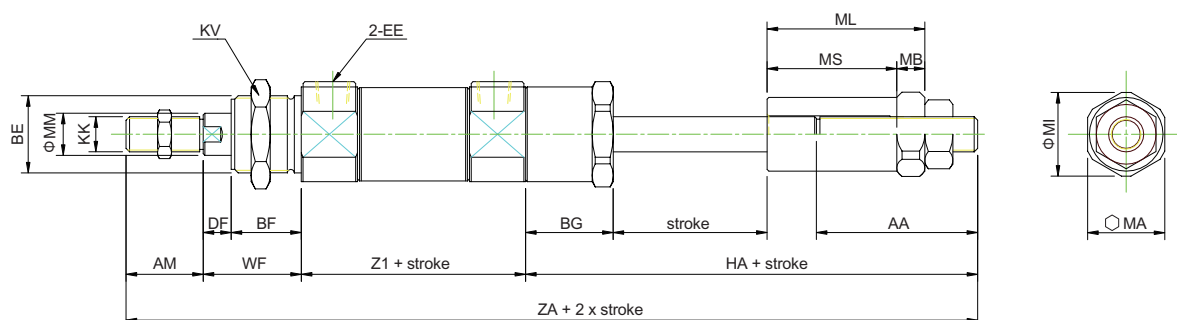


Dimensional table

Mark Bore	AM	BE	BF	CD	D	DF	EE	EX	EW	G	KK	KU	KV	KX	L	L1	MM	NI	NJ	WF	XC	Z1	ZB	ZM
$\Phi 20$	20	M22x1.5	18	8	30	6	PT1/8	27	16	15	M8x1.25	7	27	14	12	22	8	15	28.5	24	95	59	125	107
$\Phi 25$	22	M22x1.5	20	8	30	8	PT1/8	27	16	16	M10x1.25	9	27	17	12	22	10	15	28.5	28	104	64	136	120
$\Phi 32$	23	M27x2.0	20	10	38	8	PT1/8	35	20	16	M10x1.25	10	35	17	15	27	12	19	36.5	28	115	72	150	128
$\Phi 40$	23	M33x2.0	20	10	45	8	PT1/8	42	20	16	M14x1.5	14	41	22	15	27	16	22.5	43.5	28	115	72	150	128

10H-6N Adjustable forward stroke type / Dimensional features

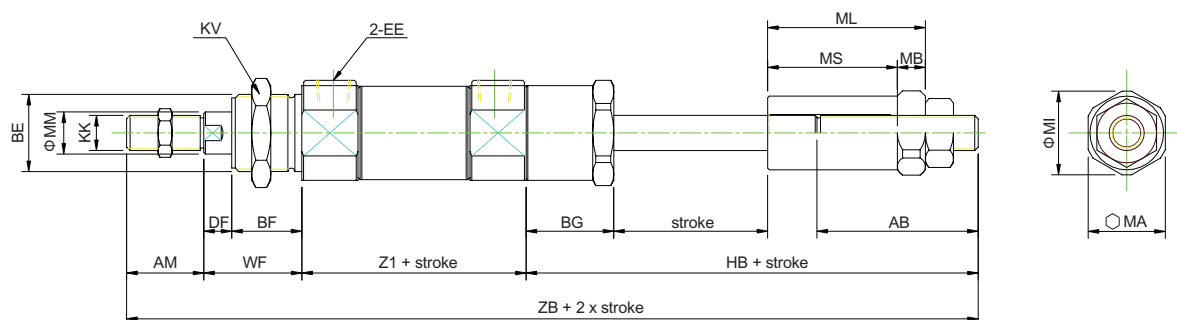
● Adjustable 25mm


Dimensional table

Mark Bore	AA	AM	BE	BF	BG	DF	EE	HA	KK	KV	MA	MB	MI	ML	MM	MS	WF	Z1	ZA
Φ 20	45	20	M22x1.5	18	25	6	PT1/8	78	M8x1.25	27	22	8	24	43	8	33	24	59	181
Φ 25	46	22	M22x1.5	20	25	8	PT1/8	79	M10x1.25	27	22	8	24	45	10	35	28	64	193
Φ 32	46	23	M27x2.0	20	25	8	PT1/8	79	M10x1.25	35	27	10	29	45	12	35	28	72	202
Φ 40	50	23	M33x2.0	20	25	8	PT1/8	83	M14x1.5	41	32	10	35	47	16	35	28	72	206

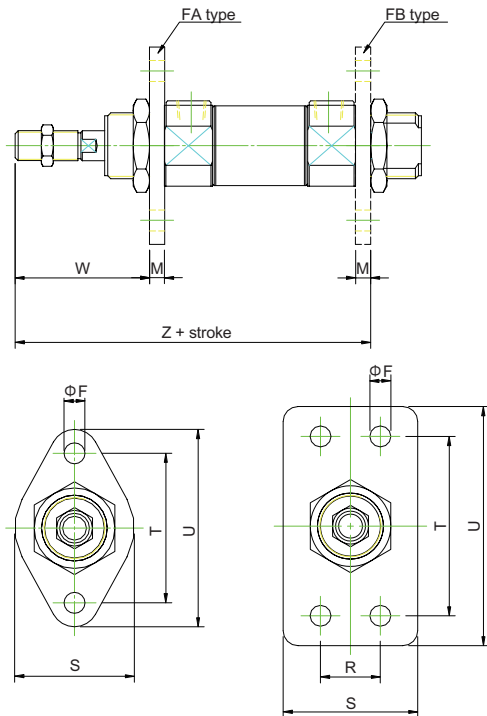
10H-6N Adjustable forward stroke type / Dimensional features

● Adjustable 50mm


Dimensional table

Mark Bore	AB	AM	BE	BF	BG	DF	EE	HB	KK	KV	MA	MB	MI	ML	MM	MS	WF	Z1	ZB
Φ 20	70	20	M22x1.5	18	25	6	PT1/8	103	M8x1.25	27	22	8	24	68	8	58	24	59	206
Φ 25	71	22	M22x1.5	20	25	8	PT1/8	104	M10x1.25	27	22	8	24	70	10	60	28	64	218
Φ 32	71	23	M27x2.0	20	25	8	PT1/8	104	M10x1.25	35	27	10	29	70	12	60	28	72	227
Φ 40	75	23	M33x2.0	20	25	8	PT1/8	108	M14x1.5	41	32	10	35	72	16	60	28	72	231

FA(FB) Accessories

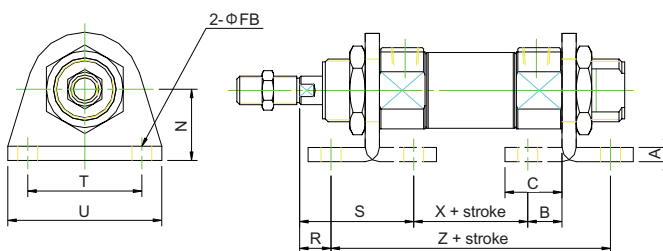


Dimensional table FA(FB) type

Mark Bore	S	F	M	R	T	U
Φ20	40	7	5	-	50	66
Φ25	40	7	5	-	50	66
Φ32	45	7	5	20	60	80
Φ40	50	9	5	30	80	100

Mark Bore	W	Z				
Φ20	19	88				
Φ25	23	97				
Φ32	23.5	104.5				
Φ40	23.5	104.5				

LB Accessories

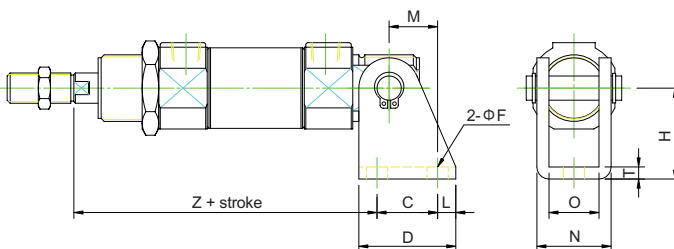


Dimensional table LB type

Mark Bore	A	B	C	FB	N	X
Φ20	5	17	25	7	25	35
Φ25	5	17	25	7	25	40
Φ32	5	20	30	7	35	42
Φ40	5	20	30	9	40	42

Mark Bore	Z	T	U	R	S	
Φ20	93	40	54	7	36	
Φ25	98	40	54	11	40	
Φ32	112	40	55	8	43.5	
Φ40	112	50	75	8	43.5	

CU Accessories

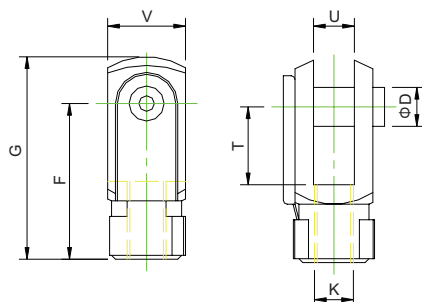


Dimensional table CU type

Mark Bore	C	FB	D	H	L	M
Φ20	20	7	32	30	6	16
Φ25	20	7	32	30	6	16
Φ32	25	7	40	40	7.5	20
Φ40	25	9	40	40	7.5	20

Mark Bore	N	O	T	Z		
Φ20	24	16	4	91		
Φ25	24	16	4	100		
Φ32	28	20	4	110		
Φ40	28	20	4	110		

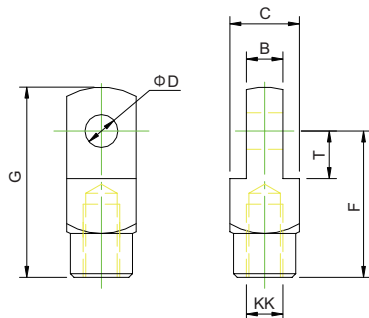
Y Rod clevis / Accessories



Dimensional table

Mark Bore	D	F	G	K	T	U	V
Φ 20	8	32	42	M8x1.25	16	8	16
Φ 25 - 32	10	40	52	M10x1.25	20	10	20
Φ 40	10	45	58	M14x1.5	20	14	25

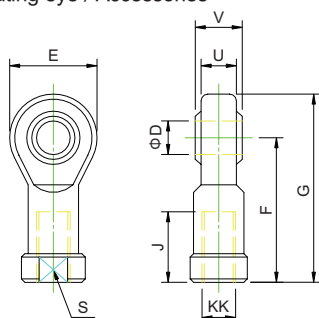
I Rod end mounting / Accessories



Dimensional table

Mark Bore	D	F	G	KK	T	U	V
Φ 20	8	32	42	M8x1.25	11	8	16
Φ 25 - 32	10	40	52	M10x1.25	13	10	19
Φ 40	10	45	57	M14x1.5	13	14	25.4

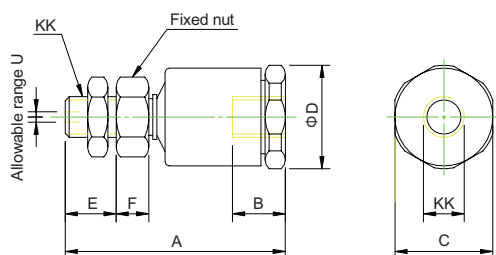
S Oscillating eye / Accessories



Dimensional table

Mark Bore	B	C	D	E	F	G	J	KK	S
Φ 20	9	12	8	22	36	47	17	M8x1.25	14
Φ 25 - 32	10.5	14	10	26	43	56	21	M10x1.25	17
Φ 40	13.5	19	14	34	57	74	27	M14x1.5	22

FT Compensating Joint / Accessories



Dimensional table

Mark Bore	A	B	C	D	E	F	K	U
Φ 20	47	11	19	20	13	6.5	M8x1.25	0.75
Φ 25 - 32	54	13	24	25.5	12.5	8	M10x1.25	1
Φ 40	71	17	29	31	15	11	M14x1.5	1.15

Cylinder weight

Unit : kg

Mark Bore	10H-6		10H-6A		10H-6D		10H-6N			
	Basic weight	Stroke 25mm	Basic weight	Stroke 25mm	Basic weight	Stroke 25mm	Adjustable stroke 25mm		Adjustable stroke 50mm	
							Basic weight	Stroke 25mm	Basic weight	Stroke 25mm
Φ20	0.150	0.019	0.141	0.019	0.176	0.029	0.275	0.029	0.337	0.029
Φ25	0.190	0.027	0.185	0.027	0.236	0.043	0.377	0.043	0.473	0.043
Φ32	0.323	0.040	0.313	0.040	0.385	0.062	0.495	0.062	0.590	0.062
Φ40	0.495	0.059	0.482	0.059	0.610	0.098	0.788	0.098	0.927	0.098

Mounting weight

Unit : kg

Mark Bore	FA / FB	LB	CU	Y	I	S	F	Nut (Rod)	Nut (Cover)
Φ20	0.049	0.173	0.064	0.046	0.044	0.053	0.061	0.005	0.011
Φ25	0.049	0.173	0.064	0.088	0.080	0.080	0.113	0.008	0.011
Φ32	0.099	0.218	0.089	0.088	0.080	0.080	0.113	0.008	0.030
Φ40	0.132	0.315	0.151	0.151	0.157	0.175	0.245	0.016	0.038